

ELEVENTH EDITION

**BRAUNWALD'S**

# HEART DISEASE

A TEXTBOOK OF  
CARDIOVASCULAR  
MEDICINE

**ZIPES  
LIBBY  
BONOW  
MANN  
TOMASELLI**

ELSEVIER



**BRAUNWALD'S**

# **HEART DISEASE**

A TEXTBOOK OF  
CARDIOVASCULAR  
MEDICINE



ELEVENTH EDITION

**BRAUNWALD'S**

# HEART DISEASE

A TEXTBOOK OF  
CARDIOVASCULAR  
MEDICINE

*Edited by*

**DOUGLAS P. ZIPES, MD**

Distinguished Professor  
Division of Cardiology and the Krannert Institute of Cardiology  
Indiana University School of Medicine  
Indianapolis, Indiana

**PETER LIBBY, MD**

Mallinckrodt Professor of Medicine  
Harvard Medical School  
Brigham and Women's Hospital  
Boston, Massachusetts

**ROBERT O. BONOW, MD**

Max and Lilly Goldberg Distinguished Professor of Cardiology  
Vice Chairman, Department of Medicine  
Director, Center for Cardiac Innovation  
Northwestern University Feinberg School of Medicine  
Chicago, Illinois

**DOUGLAS L. MANN, MD**

Lewin Chair and Professor of Medicine, Cell Biology,  
and Physiology  
Chief, Division of Cardiology  
Washington University School of Medicine in St. Louis  
Cardiologist-in-Chief  
Barnes-Jewish Hospital  
St. Louis, Missouri

**GORDON F. TOMASELLI, MD**

Michel Mirowski MD Professor of Cardiology  
Professor of Medicine  
Chief, Division of Cardiology  
Johns Hopkins School of Medicine  
Baltimore, Maryland

*Editor and Online Editor*

**EUGENE BRAUNWALD,  
MD, MD(Hon), ScD(Hon), FRCP**

Distinguished Hersey Professor of Medicine  
Harvard Medical School  
Founding Chairman, TIMI Study Group  
Brigham and Women's Hospital  
Boston, Massachusetts

ELSEVIER

# ELSEVIER

1600 John F. Kennedy Blvd.  
Ste. 1800  
Philadelphia, PA 19103-2899

## **Braunwald's Heart Disease: A Textbook of Cardiovascular Medicine, Eleventh Edition**

Two-Volume Set ISBN: 978-0-323-46342-3  
Single Volume ISBN: 978-0-323-46299-0  
International Edition ISBN: 978-0-323-55592-0

### **Copyright © 2019 by Elsevier Inc.**

Previous editions copyrighted 2015, 2012, 2008, 2005, 2001, 1997, 1992, 1988, 1984, 1980 by Saunders,  
an imprint of Elsevier Inc.

**All rights reserved.** No part of this publication may be reproduced or transmitted in any form or by any means, electronic or mechanical, including photocopying, recording, or any information storage and retrieval system, without permission in writing from the publisher. Permissions may be sought directly from Elsevier's Rights Department: phone: (+1) 215 239 3804 (US) or (+44) 1865 843830 (UK); fax: (+44) 1865 853333; e-mail: [healthpermissions@elsevier.com](mailto:healthpermissions@elsevier.com). You may also complete your request online via the Elsevier website at <http://www.elsevier.com/permissions>.

### **Notice**

Knowledge and best practice in this field are constantly changing. As new research and experience broaden our knowledge, changes in practice, treatment, and drug therapy may become necessary or appropriate. Readers are advised to check the most current information provided (i) on procedures featured or (ii) by the manufacturer of each product to be administered, to verify the recommended dose or formula, the method and duration of administration, and contraindications. It is the responsibility of the practitioner, relying on their own experience and knowledge of the patient, to make diagnoses, to determine dosages and the best treatment for each individual patient, and to take all appropriate safety precautions. To the fullest extent of the law, neither the Publisher nor the Authors assume any liability for any injury and/or damage to persons or property arising out of or related to any use of the material contained in this book.

***The Publisher***

**International Standard Book Number: 978-0-323-46342-3**

*Executive Content Strategist:* Dolores Meloni  
*Senior Content Development Specialist:* Anne Snyder  
*Publishing Services Manager:* Patricia Tannian  
*Senior Project Manager:* John Casey  
*Design Direction:* Renee Duenow

Cover image courtesy Kelly Jarvis, PhD, and Michael Markl, PhD  
Northwestern University Feinberg School of Medicine, Chicago, Illinois

Printed in Canada

9 8 7 6 5 4 3 2 1

*To*

*Joan, Debra, Jeffrey, and David*

*Beryl, Oliver, and Brigitte*

*Pat, Rob, and Sam*

*Laura, Erica, Jonathan, and Stephanie*

*Charlene, Sarah, Emily, and Matthew*



# Acknowledgments

Creating a 2000-page textbook is a herculean task requiring input from many dedicated and skilled individuals. In addition to thanking the enthusiastic contributors who have written the chapters, at Elsevier we would like to thank Dolores Meloni, executive content strategist, for her resolve in keeping five independently thinking editors on the same path; Anne Snyder, senior content development strategist, for organizing us to make things happen on time; and John Casey, senior project manager. Many others, including copyeditors, artists, and production staff helped make this textbook what it is. Finally, as stated in the preface, we owe an inestimable debt of gratitude to Dr. Braunwald for his vision, integrity, and high standards, which we have tried to emulate.

We would also like to thank our many colleagues from all over the world who have written to us with suggestions on how to improve *Heart Disease*. We consider each recommendation carefully and welcome such input. In particular, we acknowledge the comments on multiple chapters from the following:

Azin Alizadehasl, MD, Rajaie Cardiovascular Medical and Research Center, Tehran, Iran

Arash Hashemi, MD, Erfan General Hospital, Tehran, Iran

Anita Sadeghpour, MD, Rajaie Cardiovascular Medical and Research Center, Tehran, Iran

Leili Pourafkari, MD, Razi Hospital, Tabriz, Iran

Mehran Khoshfetrat, MD, Tehran, Iran

Babak Geraiely, MD, Tehran University of Medical Sciences

Shabnam Madadi, MD, Cardiac Imaging Center, Shahid Rajaei Heart Center, Tehran, Iran

Banasiak Waldemar, MD, Centre for Heart Disease, Military Hospital, Wroclaw, Poland

Carlos Benjamín Alvarez, MD, PhD, Sacré Coeur Institute, Buenos Aires, Argentina

Elias B. Hanna, MD, Division of Cardiology, Louisiana State University, New Orleans, Louisiana



# Contributors

**Keith D. Aaronson, MD, MS**

Bertram Pitt MD Collegiate Professor of Cardiovascular Medicine  
Professor of Internal Medicine  
Division of Cardiovascular Medicine  
University of Michigan  
Ann Arbor, Michigan  
*Mechanical Circulatory Support*

**William T. Abraham, MD**

Professor of Internal Medicine, Physiology, and Cell Biology  
Chair of Excellence in Cardiovascular Medicine  
Director, Division of Cardiovascular Medicine  
Associate Dean for Clinical Research  
Director, Clinical Trials Management Organization  
Deputy Director, Davis Heart and Lung Research Institute  
The Ohio State University  
Columbus, Ohio  
*Devices for Monitoring and Managing Heart Failure*

**Michael A. Acker, MD**

Chief, Division of Cardiovascular Surgery  
Director, Penn Medicine Heart and Vascular Center  
University of Pennsylvania Health System  
Philadelphia, Pennsylvania  
*Surgical Management of Heart Failure*

**Michael J. Ackerman, MD, PhD**

Windland Smith Rice Cardiovascular Genomics Research Professor  
Professor of Medicine, Pediatrics, and Pharmacology  
Mayo Clinic College of Medicine and Science  
Director, Long QT Syndrome/Genetic Heart Rhythm Clinic  
Director, Mayo Clinic Windland Smith Rice Sudden Death  
Genomics Laboratory  
Mayo Clinic  
Rochester, Minnesota  
*Genetics of Cardiac Arrhythmias*

**Philip A. Ades, MD**

Professor of Medicine  
University of Vermont College of Medicine  
Burlington, Vermont  
*Exercise-Based, Comprehensive Cardiac Rehabilitation*

**Michelle A. Albert, MD, MPH**

Professor of Medicine  
Director, CeNter for the StUdy of AdveRsiTy and CardiovascUlaR  
DiseasE (NURTURE Center)  
University of California at San Francisco  
San Francisco, California  
*Cardiovascular Disease in Heterogeneous Populations*

**Larry A. Allen, MD, MHS**

Associate Professor of Medicine  
Division of Cardiology  
University of Colorado School of Medicine  
Aurora, Colorado  
*Management of Patients with Cardiovascular Disease Approaching  
End of Life*

**Elliott M. Antman, MD**

Professor of Medicine  
Associate Dean for Clinical/Translational Research  
Harvard Medical School  
Senior Investigator  
TIMI Study Group  
Brigham and Women's Hospital  
Boston, Massachusetts  
*Critical Evaluation of Clinical Trials*

**Pavan Atluri, MD**

Assistant Professor of Surgery  
Director, Cardiac Transplantation and Mechanical Circulatory Assist  
Program  
Director, Minimally Invasive and Robotic Cardiac Surgery Program  
Division of Cardiovascular Surgery  
Department of Surgery  
University of Pennsylvania  
Philadelphia, Pennsylvania  
*Surgical Management of Heart Failure*

**Larry M. Baddour, MD**

Professor of Medicine  
Mayo Clinic College of Medicine  
Rochester, Minnesota  
*Cardiovascular Infections*

**Aaron L. Baggish, MD**

Associate Professor of Medicine  
Harvard Medical School  
Director, Cardiovascular Performance Program  
Massachusetts General Hospital  
Boston, Massachusetts  
*Exercise and Sports Cardiology*

**C. Noel Bairey Merz, MD**

Director, Barbra Streisand Women's Heart Center  
Director, Linda Joy Pollin Women's Heart Health Program  
Director, Preventive Cardiac Center  
Professor of Medicine  
Cedars-Sinai Medical Center  
Los Angeles, California  
*Cardiovascular Disease in Women*

**Gary J. Balady, MD**

Professor of Medicine  
Boston University School of Medicine  
Director, Non-Invasive Cardiovascular Laboratories  
Boston Medical Center  
Boston, Massachusetts  
*Exercise Electrocardiographic Testing*

**David T. Balzer, MD**

Professor  
Division of Pediatric Cardiology  
Washington University School of Medicine  
St. Louis, Missouri  
*Catheter-Based Treatment of Congenital Heart Disease*

**Joshua A. Beckman, MD**

Professor of Medicine  
Division of Cardiovascular Medicine  
Director, Vanderbilt Translational and Clinical Cardiovascular  
Research Center  
Vanderbilt University School of Medicine  
Nashville, Tennessee  
*Anesthesia and Noncardiac Surgery in Patients with Heart Disease*

**Donald M. Bers, PhD**

Silva Chair for Cardiovascular Research  
Distinguished Professor and Chair  
Department of Pharmacology  
University of California, Davis  
Davis, California  
*Mechanisms of Cardiac Contraction and Relaxation*

**Sanjeev Bhalla, MD**

Professor  
Mallinckrodt Institute of Radiology  
Washington University in St. Louis  
Department of Diagnostic Radiology  
Section of Cardiothoracic Imaging  
St. Louis, Missouri  
*The Chest Radiograph in Cardiovascular Disease*

**Aruni Bhatnagar, PhD**

Professor of Medicine  
Division of Cardiovascular Medicine  
Department of Medicine  
University of Louisville  
Louisville, Kentucky  
*Air Pollution and Cardiovascular Disease*

**Deepak L. Bhatt, MD, MPH**

Senior Investigator, TIMI Study Group  
Executive Director, Interventional Cardiovascular Programs  
Heart and Vascular Center  
Brigham and Women's Hospital  
Professor of Medicine  
Harvard Medical School  
Boston, Massachusetts  
*Percutaneous Coronary Intervention  
Treatment of Noncoronary Obstructive Vascular Disease*

**Surya P. Bhatt, MD**

Assistant Professor of Medicine  
UAB Lung Health Center  
Division of Pulmonary, Allergy, and Critical Care Medicine  
University of Alabama at Birmingham  
Birmingham, Alabama  
*Chronic Lung Diseases and Cardiovascular Disease*

**Bernadette Biondi, MD**

Professor  
Department of Clinical Medicine and Surgery  
University of Naples Federico II  
Naples, Italy  
*Endocrine Disorders and Cardiovascular Disease*

**Erin A. Bohula, MD, DPhil**

TIMI Study Group and Division of Cardiology  
Brigham and Women's Hospital  
Harvard Medical School  
Boston, Massachusetts  
*ST-Elevation Myocardial Infarction: Management*

**Marc P. Bonaca, MD, MPH**

Associate Physician  
Division of Cardiovascular Medicine  
Brigham and Women's Hospital  
Assistant Professor, Harvard Medical School  
Investigator, TIMI Study Group  
Boston, Massachusetts  
*Approach to the Patient with Chest Pain  
Peripheral Artery Diseases*

**Robert O. Bonow, MD, MS**

Max and Lilly Goldberg Distinguished Professor of Cardiology  
Vice Chairman, Department of Medicine  
Director, Center for Cardiac Innovation  
Northwestern University Feinberg School of Medicine  
Chicago, Illinois  
*Nuclear Cardiology  
Approach to the Patient with Valvular Heart Disease  
Appropriate Use Criteria: Echocardiography  
Appropriate Use Criteria: Multimodality Imaging in Stable Ischemic  
Heart Disease and Heart Failure  
Aortic Valve Disease  
Mitral Valve Disease  
Guidelines: Management of Valvular Heart Disease*

**Barry A. Borlaug, MD**

Associate Professor of Medicine  
Mayo Medical School  
Consultant, Cardiovascular Diseases  
Mayo Clinic  
Rochester, Minnesota  
*Mechanisms of Cardiac Contraction and Relaxation*

**Eugene Braunwald, MD, MD(Hon), ScD(Hon), FRCP**

Distinguished Hersey Professor of Medicine  
Harvard Medical School;  
Founding Chairman, TIMI Study Group  
Brigham and Women's Hospital  
Boston, Massachusetts  
*Non-ST Elevation Acute Coronary Syndromes*

**Alan C. Braverman, MD**

Alumni Endowed Professor in Cardiovascular Diseases  
Professor of Medicine  
Washington University School of Medicine  
Director, Marfan Syndrome Clinic  
Director, Inpatient Cardiology Firm  
St. Louis, Missouri  
*Diseases of the Aorta*

**J. Douglas Bremner, MD**

Professor of Psychiatry and Radiology  
Emory University School of Medicine  
and Atlanta Veterans Affairs Medical Center  
Atlanta, Georgia  
*Psychiatric and Behavioral Aspects of Cardiovascular Disease*

**John E. Brush Jr, MD**

Professor of Medicine  
Cardiology Division  
Eastern Virginia Medical School and Sentara Healthcare  
Norfolk, Virginia  
*Clinical Decision Making in Cardiology*



**Julie E. Buring, MD**

Professor of Medicine  
Brigham and Women's Hospital  
Professor of Epidemiology  
Harvard Medical School  
Harvard School of Public Health  
Boston, Massachusetts  
*Risk Markers and the Primary Prevention of Cardiovascular Disease*

**Hugh Calkins, MD**

Nicholas J. Fortuin Professor of Cardiology  
Director, Cardiac Arrhythmia Service  
Director, Electrophysiology Laboratory and Arrhythmia Service  
The Johns Hopkins Hospital  
Baltimore, Maryland  
*Hypotension and Syncope*

**John M. Canty Jr., MD**

SUNY Distinguished and Albert and Elizabeth Rekate Professor  
Chief, Division of Cardiovascular Medicine  
Jacobs School of Medicine and Biomedical Sciences  
University at Buffalo  
Buffalo, New York  
*Coronary Blood Flow and Myocardial Ischemia*

**Mercedes R. Carnethon, PhD**

Associate Professor and Vice Chair  
Department of Preventive Medicine  
Feinberg School of Medicine  
Northwestern University  
Chicago, Illinois  
*Cardiovascular Disease in Heterogeneous Populations*

**Leslie T. Cooper Jr., MD**

Professor of Medicine  
Chair, Cardiovascular Department  
Mayo Clinic  
Jacksonville, Florida  
*Myocarditis*

**Mark A. Creager, MD**

Professor of Medicine and Surgery  
Geisel School of Medicine at Dartmouth  
Hanover, New Hampshire  
Director, Heart and Vascular Center  
Dartmouth-Hitchcock Medical Center  
Lebanon, New Hampshire  
*Peripheral Artery Diseases*

**George D. Dangas, MD, PhD**

Professor of Medicine (Cardiology)  
Zena and Michael A. Wiener Cardiovascular Institute  
Icahn School of Medicine at Mount Sinai  
New York, New York  
*Coronary Angiography and Intravascular Imaging*

**James A. de Lemos, MD**

Professor of Internal Medicine  
Division of Cardiology  
UT Southwestern Medical Center  
Dallas, Texas  
*Stable Ischemic Heart Disease*  
*Percutaneous Coronary Intervention*

**Jean-Pierre Després, PhD**

Scientific Director  
International Chair on Cardiometabolic Risk  
Professor, Department of Kinesiology  
Faculty of Medicine  
Université Laval  
Director of Research, Cardiology  
Québec Heart and Lung Institute  
Québec, Canada  
*Obesity and Cardiometabolic Disease*

**Stephen Devries, MD**

Executive Director  
Gaples Institute for Integrative Cardiology  
Deerfield, Illinois;  
Associate Professor  
Division of Cardiology  
Northwestern University Feinberg School of Medicine  
Chicago, Illinois  
*Integrative Approaches to the Management of Patients with Heart Disease*

**Vasken Dilsizian, MD**

Professor of Medicine and Radiology  
University of Maryland School of Medicine  
Chief, Division of Nuclear Medicine  
University of Maryland Medical Center  
Baltimore, Maryland  
*Nuclear Cardiology*  
*Appropriate Use Criteria: Multimodality Imaging in Stable Ischemic Heart Disease and Heart Failure*

**Mark T. Dransfield, MD**

Professor of Medicine  
UAB Lung Health Center  
Division of Pulmonary, Allergy, and Critical Care Medicine  
University of Alabama at Birmingham  
Birmingham VA Medical Center  
Birmingham, Alabama  
*Chronic Lung Diseases and Cardiovascular Disease*

**Dirk J. Duncker, MD, PhD**

Professor of Experimental Cardiology  
Department of Cardiology  
Erasmus University Medical Center  
Rotterdam, The Netherlands  
*Coronary Blood Flow and Myocardial Ischemia*

**Rodney H. Falk, MD**

Director, Cardiac Amyloidosis Program  
Brigham and Women's Hospital  
Associate Clinical Professor of Medicine  
Harvard Medical School  
Boston, Massachusetts  
*The Dilated, Restrictive, and Infiltrative Cardiomyopathies*

**James C. Fang, MD**

Professor of Medicine  
Chief, Division of Cardiovascular Medicine  
Executive Director  
Cardiovascular Service Line  
University of Utah Health Sciences Center  
Salt Lake City, Utah  
*History and Physical Examination: An Evidence-Based Approach*

**Savitri E. Fedson, MD**

Associate Professor  
Center for Medical Ethics and Health Policy  
Baylor College of Medicine  
Houston, Texas  
*Ethics in Cardiovascular Medicine*

**G. Michael Felker, MD, MHS**

Professor of Medicine  
Division of Cardiology  
Chief, Heart Failure Section  
Duke University School of Medicine  
Durham, North Carolina  
*Diagnosis and Management of Acute Heart Failure*

**Jerome L. Fleg, MD**

Medical Officer  
Division of Cardiovascular Sciences  
National Heart, Lung, and Blood Institute  
Bethesda, Maryland  
*Cardiovascular Disease in the Elderly*

**Lee A. Fleisher, MD**

Robert D. Dripps Professor and Chair  
Anesthesiology and Critical Care  
Professor of Medicine  
Perelman School of Medicine at the University of Pennsylvania  
Philadelphia, Pennsylvania  
*Anesthesia and Noncardiac Surgery in Patients with Heart Disease*

**Daniel E. Forman, MD**

Professor of Medicine  
University of Pittsburgh  
Section of Geriatric Cardiology  
Divisions of Geriatrics and Cardiology  
University of Pittsburgh Medical Center  
VA Pittsburgh Healthcare System  
Pittsburgh, Pennsylvania  
*Cardiovascular Disease in the Elderly*

**William K. Freeman, MD**

Professor of Medicine  
Mayo Clinic College of Medicine  
Scottsdale, Arizona  
*Cardiovascular Infections*

**J. Michael Gaziano, MD, MPH**

Chief, Division of Aging  
Brigham and Women's Hospital  
Scientific Director  
Massachusetts Veterans Epidemiology Research and Information  
Center  
Veterans Administration  
Boston Healthcare System  
Professor of Medicine  
Harvard Medical School  
Boston, Massachusetts  
*Global Burden of Cardiovascular Disease*

**Thomas A. Gaziano, MD, MSc**

Assistant Professor  
Harvard Medical School  
Cardiovascular Medicine Division  
Brigham and Women's Hospital  
Boston, Massachusetts  
*Global Burden of Cardiovascular Disease*

**Jacques Genest, MD**

Professor, Faculty of Medicine  
McGill University  
Research Institute of the McGill University Health Center  
Montreal, Quebec, Canada  
*Lipoprotein Disorders and Cardiovascular Disease*

**Robert E. Gerszten, MD**

Herman Dana Professor of Medicine  
Harvard Medical School  
Chief, Division of Cardiovascular Medicine  
Beth Israel Deaconess Medical Center  
Boston, Massachusetts  
*Biomarkers and Use in Precision Medicine*

**Linda Gillam, MD, MPH**

Chairperson  
Department of Cardiovascular Medicine  
Morristown Medical Center  
Atlantic Health System  
Morristown, New Jersey  
*Echocardiography*

**Robert P. Giugliano, MD, SM**

Physician, Cardiovascular Medicine Division  
Brigham and Women's Hospital  
Associate Professor of Medicine  
Harvard Medical School  
Boston, Massachusetts  
*Non-ST Elevation Acute Coronary Syndromes*

**Ary L. Goldberger, MD**

Professor of Medicine  
Harvard Medical School  
Director  
Margret and H.A. Rey Institute for Nonlinear Dynamics in Medicine  
Associate Chief  
Interdisciplinary Medicine and Biotechnology  
Beth Israel Deaconess Medical Center  
Boston, Massachusetts  
*Electrocardiography*

**Jeffrey J. Goldberger, MD, MBA**

Professor of Medicine and Biomedical Engineering  
Chief of the Cardiovascular Division  
University of Miami Miller School of Medicine  
Miami, Florida  
*Cardiac Arrest and Sudden Cardiac Death*

**Samuel Z. Goldhaber, MD**

Professor of Medicine  
Harvard Medical School  
Director, Thrombosis Research Group  
Senior Staff Physician, Cardiovascular Medicine Division  
Brigham and Women's Hospital  
Boston, Massachusetts  
*Pulmonary Embolism*

**Larry B. Goldstein, MD**

Ruth L. Works Professor and Chairman  
Department of Neurology  
Co-Director, Kentucky Neuroscience Institute  
University of Kentucky College of Medicine  
Lexington, Kentucky  
*Prevention and Management of Ischemic Stroke*

**William J. Groh, MD, MPH**

Clinical Professor of Medicine  
 Medical University of South Carolina  
 Chief of Medicine, Ralph H. Johnson VAMC  
 Charleston, South Carolina  
*Neurologic Disorders and Cardiovascular Disease*

**Martha Gulati, MD**

Division Chief of Cardiology  
 University of Arizona, Phoenix  
 Professor of Medicine  
 Physician Executive Director  
 Banner University Medical Center Cardiovascular Institute  
 Phoenix, Arizona  
*Cardiovascular Disease in Women*

**Gerd Hasenfuss, MD**

Professor of Medicine  
 Chair, Department of Cardiology and Pneumology  
 Chair, Heart Center  
 University of Goettingen  
 Chair, Heart Research Center  
 DZHK (German Center of Cardiovascular Research)  
 Goettingen, Germany  
*Pathophysiology of Heart Failure*

**Howard C. Herrmann, MD**

John W. Bryfogle Professor of Cardiovascular Medicine and Surgery  
 Perelman School of Medicine at the University of Pennsylvania  
 Health System Director for Interventional Cardiology  
 Director, Cardiac Catheterization Labs  
 Hospital of the University of Pennsylvania  
 Philadelphia, Pennsylvania  
*Transcatheter Therapies for Valvular Heart Disease*

**Joerg Herrmann, MD**

Associate Professor of Medicine  
 Department of Cardiovascular Diseases  
 Mayo Clinic  
 Rochester, Minnesota  
*Cardiac Catheterization*

**Ray E. Hershberger, MD**

Professor of Medicine  
 Director, Division of Human Genetics  
 Division of Cardiovascular Medicine  
 Section of Heart Failure and Cardiac Transplantation  
 The Ohio State University Wexner Medical Center  
 Columbus, Ohio  
*The Dilated, Restrictive, and Infiltrative Cardiomyopathies*

**L. David Hillis, MD**

Professor Emeritus and Former Chair  
 Department of Internal Medicine  
 The University of Texas Health Science Center  
 San Antonio, Texas  
*Drug and Toxin-Induced Cardiomyopathies*

**Priscilla Y. Hsue, MD**

Professor  
 Department of Medicine  
 University of California  
 Division of Cardiology  
 San Francisco General Hospital  
 San Francisco, California  
*Cardiovascular Abnormalities in HIV-Infected Individuals*

**Marc Humbert, MD, PhD**

Professor of Respiratory Medicine  
 Service de Pneumologie  
 Hôpital Bicêtre  
 Assistance, Publique Hôpitaux de Paris  
 Université Paris-Sud  
 Paris, France  
*Pulmonary Hypertension*

**Massimo Imazio, MD**

Contract Professor of Physiology  
 Department of Public Health and Pediatrics  
 University of Torino  
 Attending Cardiologist  
 University Cardiology Division  
 Department of Medical Sciences  
 AOU Città della Salute e della Scienza di Torino  
 Torino, Italy  
*Pericardial Diseases*

**Silvio E. Inzucchi, MD**

Professor  
 Department of Medicine, Section of Endocrinology  
 Yale University School of Medicine  
 New Haven, Connecticut  
*Diabetes and the Cardiovascular System*

**James L. Januzzi Jr, MD**

Physician  
 Cardiology Division  
 Massachusetts General Hospital  
 Hutter Family Professor of Medicine  
 Harvard Medical School  
 Boston, Massachusetts  
*Approach to the Patient with Heart Failure*

**Cylen Javidan-Nejad, MD**

Associate Professor  
 Mallinckrodt Institute of Radiology  
 Washington University in St. Louis  
 Department of Diagnostic Radiology  
 Section of Cardiothoracic Imaging  
 St. Louis, Missouri  
*The Chest Radiograph in Cardiovascular Disease*

**Mariell Jessup, MD**

Professor Emeritus of Medicine  
 University of Pennsylvania  
 Philadelphia, Pennsylvania;  
 Chief Scientific Officer  
 Fondation Leducq  
 Paris, France  
*Surgical Management of Heart Failure*

**Sekar Kathiresan, MD**

Associate Professor of Medicine  
 Harvard Medical School  
 Director, Center for Genomic Medicine  
 Massachusetts General Hospital  
 Boston, Massachusetts  
*Principles of Cardiovascular Genetics*

**Scott Kinlay, MBBS, PhD**

Associate Chief, Cardiovascular Medicine  
 Director, Cardiac Catheterization Laboratory and Vascular Medicine  
 Physician, Brigham and Women's Hospital  
 West Roxbury, Massachusetts;  
 Associate Professor in Medicine  
 Harvard Medical School  
 Boston, Massachusetts  
*Treatment of Noncoronary Obstructive Vascular Disease*

**Irwin Klein, MD**

Professor of Medicine  
New York University School of Medicine  
New York, New York  
*Endocrine Disorders and Cardiovascular Disease*

**Kirk U. Knowlton, MD**

Professor of Medicine  
Chief, Division of Cardiology  
Department of Medicine  
University of California San Diego  
La Jolla, California  
*Myocarditis*

**Harlan M. Krumholz, MD, SM**

Section of Cardiovascular Medicine  
Department of Internal Medicine  
Yale School of Medicine  
Department of Health Policy and Management  
Yale School of Public Health  
Center for Outcomes Research and Evaluation  
Yale–New Haven Hospital  
New Haven, Connecticut  
*Clinical Decision Making in Cardiology*

**Raymond Y. Kwong, MD, MPH**

Associate Professor of Medicine  
Harvard Medical School  
Director of Cardiac Magnetic Resonance Imaging  
Cardiovascular Medicine Division  
Brigham and Women's Hospital  
Boston, Massachusetts  
*Cardiovascular Magnetic Resonance Imaging*

**Bonnie Ky, MD, MSCE**

Assistant Professor of Medicine and Epidemiology  
Division of Cardiovascular Medicine  
University of Pennsylvania School of Medicine  
Senior Scholar  
Center for Clinical Epidemiology and Biostatistics  
University of Pennsylvania School of Medicine  
Philadelphia, Pennsylvania  
*Cardio-Oncology*

**Richard A. Lange, MD, MBA**

President and Dean, Paul L. Foster School of Medicine  
Rick and Ginger Francis Endowed Chair  
Professor, Department of Internal Medicine  
Texas Tech University Health Sciences Center at El Paso  
El Paso, Texas  
*Drug and Toxin-Induced Cardiomyopathies*

**Eric Larose, DVM, MD**

Associate Professor, Department of Medicine  
Faculty of Medicine  
Québec Heart and Lung Institute  
Université Laval  
Québec, Canada  
*Obesity and Cardiometabolic Disease*

**John M. Lasala, MD**

Professor of Medicine  
Cardiology Division  
Washington University School of Medicine  
St. Louis, Missouri  
*Catheter-Based Treatment of Congenital Heart Disease*

**Daniel J. Lenihan, MD**

Professor of Medicine  
Director, Cardio-Oncology Center of Excellence  
Advanced Heart Failure  
Clinical Research  
Cardiovascular Division  
Washington University in St. Louis  
St. Louis, Missouri  
*Tumors Affecting the Cardiovascular System*

**Martin M. LeWinter, MD**

Professor of Medicine and Molecular Physiology and Biophysics  
University of Vermont Larner College of Medicine  
Attending Cardiologist and Director  
Heart Failure and Cardiomyopathy Program  
University of Vermont Medical Center  
Burlington, Vermont  
*Pericardial Diseases*

**Peter Libby, MD**

Mallinckrodt Professor of Medicine  
Harvard Medical School  
Brigham and Women's Hospital  
Boston, Massachusetts  
*Biomarkers and Use in Precision Medicine*  
*The Vascular Biology of Atherosclerosis*  
*Risk Markers and the Primary Prevention of Cardiovascular Disease*  
*Systemic Hypertension: Management*  
*Lipoprotein Disorders and Cardiovascular Disease*  
*ST-Elevation Myocardial Infarction: Pathophysiology and Clinical Evolution*

**Brian R. Lindman, MD, MSci**

Associate Professor of Medicine  
Medical Director, Structural Heart and Valve Center  
Vanderbilt University Medical Center  
Nashville, Tennessee  
*Aortic Valve Disease*

**Sheldon E. Litwin, MD**

Countess Alicia Spaulding-Paolozzi SmartState Endowed Chair in  
Cardiovascular Imaging  
Professor of Medicine  
Division of Cardiology  
Medical University of South Carolina  
Ralph H. Johnson Veterans Affairs Medical Center  
Charleston, South Carolina  
*Heart Failure with a Preserved Ejection Fraction*

**Michael J. Mack, MD**

Medical Director, Cardiovascular Surgery  
Baylor Scott & White Health  
Plano, Texas  
*Transcatheter Therapies for Valvular Heart Disease*

**Calum A. MacRae, MB, ChB, PhD**

Associate Professor of Medicine  
Chief, Cardiovascular Medicine  
Brigham and Women's Hospital and Harvard Medical School  
Broad Institute of Harvard and MIT  
Harvard Stem Cell Institute  
Boston, Massachusetts  
*Personalized and Precision Cardiovascular Medicine*

**Douglas L. Mann, MD**

Lewin Chair and Professor of Medicine, Cell Biology, and Physiology

Chief, Division of Cardiology  
Washington University School of Medicine in St. Louis  
Cardiologist-in-Chief  
Barnes-Jewish Hospital  
St. Louis, Missouri

*Approach to the Patient with Heart Failure*  
*Pathophysiology of Heart Failure*  
*Management of Heart Failure Patients with Reduced Ejection Fraction*

**Barry J. Maron, MD**

Hypertrophic Cardiomyopathy Institute  
Tufts Medical Center  
Boston, Massachusetts  
*Hypertrophic Cardiomyopathy*

**Martin S. Maron, MD**

Director, Hypertrophic Cardiomyopathy Institute  
Tufts Medical Center  
Boston, Massachusetts  
*Hypertrophic Cardiomyopathy*

**Nikolaus Marx, MD**

Professor of Medicine/Cardiology  
Department of Internal Medicine I  
University Hospital Aachen  
Aachen, Germany  
*Diabetes and the Cardiovascular System*

**Justin C. Mason, PhD**

Professor of Vascular Rheumatology  
National Heart and Lung Institute  
Imperial College London  
London, United Kingdom  
*Rheumatic Diseases and the Cardiovascular System*

**Frederick A. Masoudi, MD, MSPH**

Professor of Medicine  
University of Colorado Anschutz Medical Campus  
Aurora, Colorado;  
Chief Science Officer  
National Cardiovascular Data Registry Programs  
Washington, DC  
*Measuring and Improving Quality of Care: Relevance to Cardiovascular Clinical Practice*

**Laura Mauri, MD, MSc**

Professor of Medicine  
Harvard Medical School  
Director of Clinical Biometrics  
Division of Cardiovascular Medicine Division  
Brigham and Women's Hospital  
Boston, Massachusetts  
*Percutaneous Coronary Intervention*

**Bongani M. Mayosi, MBChB, DPhil**

Professor of Medicine  
Dean, Faculty of Health Sciences  
University of Cape Town  
Cape Town, South Africa  
*Rheumatic Fever*

**Laurence B. McCullough, PhD**

Distinguished Professor Emeritus  
Center for Medical Ethics and Health Policy  
Baylor College of Medicine  
Houston, Texas  
*Ethics in Cardiovascular Medicine*

**Peter A. McCullough, MD, MPH**

Vice Chief of Internal Medicine  
Baylor University Medical Center  
Consultant Cardiologist  
Baylor Heart and Vascular Hospital  
Dallas, Texas  
*Interface Between Renal Disease and Cardiovascular Illness*

**Darren K. McGuire, MD, MHSc**

Professor of Internal Medicine  
Division of Cardiology  
Department of Internal Medicine  
University of Texas Southwestern Medical Center  
Dallas, Texas  
*Diabetes and the Cardiovascular System*

**Vallerie V. McLaughlin, MD**

Professor of Medicine  
Division of Cardiovascular Medicine  
Director, Pulmonary Hypertension Program  
University of Michigan Health System  
Ann Arbor, Michigan  
*Pulmonary Hypertension*

**Roxana Mehran, MD**

Professor of Medicine (Cardiology)  
Director of Interventional Cardiovascular Research and Clinical Trials  
Zena and Michael A. Wiener Cardiovascular Institute  
Icahn School of Medicine at Mount Sinai  
New York, New York  
*Coronary Angiography and Intravascular Imaging*

**John M. Miller, MD**

Professor of Medicine  
Indiana University School of Medicine  
Director, Cardiac Electrophysiology Services  
Indiana University Health  
Indianapolis, Indiana  
*Diagnosis of Cardiac Arrhythmias*  
*Therapy for Cardiac Arrhythmias*

**James K. Min, MD**

Professor of Radiology and Medicine  
Director, Dalio Institute of Cardiovascular Imaging  
Weill Cornell Medicine, NewYork–Presbyterian  
New York, New York  
*Cardiac Computed Tomography*

**David M. Mirvis, MD**

Professor Emeritus  
University of Tennessee College of Medicine  
Memphis, Tennessee  
*Electrocardiography*

**Fred Morady, MD**

McKay Professor of Cardiovascular Disease  
Professor of Medicine  
University of Michigan Health System  
Ann Arbor, Michigan  
*Atrial Fibrillation: Clinical Features, Mechanisms, and Management*

**Anthony P. Morise, MD**

Professor of Medicine  
West Virginia University School of Medicine  
Director, Stress Cardiovascular Laboratory  
West Virginia University Heart and Vascular Institute  
Morgantown, West Virginia  
*Exercise Electrocardiographic Testing*

**David A. Morrow, MD, MPH**

Professor of Medicine  
Harvard Medical School  
Director, Levine Cardiac Intensive Care Unit  
Cardiovascular Division  
Brigham and Women's Hospital  
Director, TIMI Biomarker Program  
Senior Investigator, TIMI Study Group  
Boston, Massachusetts  
*ST-Elevation Myocardial Infarction: Pathophysiology and Clinical Evolution*  
*ST-Elevation Myocardial Infarction: Management*  
*Stable Ischemic Heart Disease*

**Dariush Mozaffarian, MD, DrPh**

Dean, Friedman School of Nutrition Science & Policy  
Jean Mayer Professor of Nutrition and Medicine  
Tufts University  
Boston, Massachusetts  
*Nutrition and Cardiovascular and Metabolic Diseases*

**Kiran Musunuru, MD, PhD, MPH**

Associate Professor of Cardiovascular Medicine and Genetics  
Perelman School of Medicine at the University of Pennsylvania  
Philadelphia, Pennsylvania  
*Principles of Cardiovascular Genetics*  
*Cardiovascular Regeneration and Repair*

**Robert J. Myerburg, MD**

Professor of Medicine and Physiology  
Department of Medicine  
University of Miami Miller School of Medicine  
Miami, Florida  
*Cardiac Arrest and Sudden Cardiac Death*

**Patrick T. O'Gara, MD**

Professor of Medicine  
Harvard Medical School  
Senior Physician  
Brigham and Women's Hospital  
Boston, Massachusetts  
*History and Physical Examination: An Evidence-Based Approach*  
*Prosthetic Heart Valves*

**Jeffrey E. Olgin, MD**

Chief of Cardiology  
Gallo-Chatterjee Distinguished Professor of Medicine  
Co-Director of the UCSF Heart and Vascular Center  
University of California, San Francisco  
San Francisco, California  
*Supraventricular Arrhythmias*  
*Ventricular Arrhythmias*  
*Bradyarrhythmias and Atrioventricular Block*

**Iacopo Olivetto, MD**

Referral Center for Cardiomyopathies  
Azienda Ospedaliera Universitaria Careggi  
Florence, Italy  
*Hypertrophic Cardiomyopathy*

**Catherine M. Otto, MD**

J. Ward Kennedy-Hamilton Endowed Chair in Cardiology  
Professor of Medicine  
Director, Heart Valve Clinic  
University of Washington School of Medicine  
Seattle, Washington  
*Approach to the Patient with Valvular Heart Disease*  
*Aortic Valve Disease*  
*Guidelines: Management of Valvular Heart Disease*

**Francis D. Pagani, MD, PhD**

Otto Gago MD Professor of Cardiac Surgery  
Department of Cardiac Surgery  
University of Michigan Hospital  
Ann Arbor, Michigan  
*Mechanical Circulatory Support*

**Patricia A. Pellikka, MD**

Chair, Division of Cardiovascular Ultrasound  
Professor of Medicine  
Consultant, Department of Cardiovascular Medicine  
Mayo Clinic  
Rochester, Minnesota  
*Tricuspid, Pulmonic, and Multivalvular Disease*

**Philippe Pibarot, DVM, PhD**

Professor  
Québec Heart & Lung Institute  
Université Laval  
Québec, Canada  
*Prosthetic Heart Valves*

**Paul Poirier, MD, PhD**

Professor, Faculty of Pharmacy  
Québec Heart and Lung Institute  
Université Laval  
Québec, Canada  
*Obesity and Cardiometabolic Disease*

**Dorairaj Prabhakaran, MD, DM (Cardiology), MSc**

Director, Centre for Control of Chronic Conditions  
Vice President (Research and Policy)  
Public Health Foundation of India  
Gurgaon, India;  
Professor (Epidemiology)  
London School of Hygiene and Tropical Medicine  
London, United Kingdom  
*Global Burden of Cardiovascular Disease*

**Andrew N. Redington, MD**

Chief, Pediatric Oncology  
Heart Institute  
Cincinnati Children's Hospital Medical Center  
Cincinnati, Ohio  
*Congenital Heart Disease in the Adult and Pediatric Patient*

**Susan Redline, MD, MPH**

Peter C. Farrell Professor of Sleep Medicine  
Harvard Medical School  
Senior Physician, Division of Sleep and Circadian Disorders  
Departments of Medicine and Neurology  
Brigham and Women's Hospital  
Physician, Division of Pulmonary Medicine  
Department of Medicine  
Beth Israel Deaconess Medical Center  
Boston, Massachusetts  
*Sleep-Disordered Breathing and Cardiac Disease*

**Paul M. Ridker, MD**

Eugene Braunwald Professor of Medicine  
Harvard Medical School  
Director, Center for Cardiovascular Disease Prevention  
Division of Preventive Medicine  
Brigham and Women's Hospital  
Boston, Massachusetts  
*Biomarkers and Use in Precision Medicine*  
*Risk Markers and the Primary Prevention of Cardiovascular Disease*

**David Robertson, MD**

Professor of Medicine, Pharmacology and Neurology  
Vanderbilt University Medical Center  
Nashville, Tennessee  
*Cardiovascular Manifestations of Autonomic Disorders*

**Rose Marie Robertson, MD**

Chief Science and Medical Officer  
American Heart Association  
Dallas, Texas  
*Cardiovascular Manifestations of Autonomic Disorders*

**Dan M. Roden, MD**

Professor of Medicine, Pharmacology, and Biomedical Informatics  
Director, Oates Institute for Experimental Therapeutics  
Senior Vice-President for Personalized Medicine  
Vanderbilt University Medical Center  
Nashville, Tennessee  
*Drug Therapeutics and Personalized Medicine*

**Michael Rubart, MD**

Assistant Professor of Pediatrics  
Department of Pediatrics  
Indiana University School of Medicine  
Indianapolis, Indiana  
*Mechanisms of Cardiac Arrhythmias*

**John S. Rumsfeld, MD, PhD**

Professor of Medicine  
University of Colorado School of Medicine  
Anschutz Medical Campus  
Aurora, Colorado;  
Chief Innovation Officer  
American College of Cardiology  
Washington, DC  
*Measuring and Improving Quality of Care: Relevance to Cardiovascular Clinical Practice*

**Marc S. Sabatine, MD, MPH**

Chairman, TIMI Study Group  
Lewis Dexter MD Distinguished Chair in Cardiovascular Medicine  
Brigham and Women's Hospital  
Professor of Medicine  
Harvard Medical School  
Boston, Massachusetts  
*Approach to the Patient with Chest Pain*

**Marc Schermerhorn, MD**

Associate Professor of Surgery  
Harvard Medical School  
Chief, Division of Vascular and Endovascular Surgery  
Beth Israel Deaconess Medical Center  
Boston, Massachusetts  
*Diseases of the Aorta*

**Benjamin M. Scirica, MD, MPH**

Associate Professor of Medicine  
Harvard Medical School  
Associate Physician, Cardiovascular Division  
Senior Investigator, TIMI Study Group  
Brigham and Women's Hospital  
Boston, Massachusetts  
*ST-Elevation Myocardial Infarction: Pathophysiology and Clinical Evolution*

**Ashish Shah, MD**

Professor of Medicine  
Department of Cardiac Surgery  
Vanderbilt University Medical Center  
Nashville, Tennessee  
*Tumors Affecting the Cardiovascular System*

**Candice K. Silversides, MD**

Associate Professor of Medicine  
Mount Sinai Hospital  
Toronto, Ontario, Canada  
*Pregnancy and Heart Disease*

**Jeffrey F. Smallhorn, MBBS**

Professor Emeritus of Pediatrics  
University of Alberta  
Edmonton, Alberta, Canada  
*Congenital Heart Disease in the Adult and Pediatric Patient*

**Scott D. Solomon, MD**

Professor of Medicine  
Harvard Medical School  
Director, Noninvasive Cardiology  
Brigham and Women's Hospital  
Boston, Massachusetts  
*Echocardiography*

**Lynne Warner Stevenson, MD**

Director of Cardiomyopathy and Lisa Jacobson Professor of Medicine  
Vanderbilt Heart and Vascular Institute  
Vanderbilt University Medical Center  
Nashville, Tennessee  
*Management of Patients with Cardiovascular Disease Approaching End of Life*

**Rakesh M. Suri, MD, DPhil**

Professor of Surgery  
Cleveland Clinic Abu Dhabi  
Abu Dhabi, United Arab Emirates  
*Cardiovascular Infections*

**Charles D. Swerdlow, MD**

Clinical Professor of Medicine  
Cedars-Sinai Medical Center  
University of California Los Angeles  
Los Angeles, California  
*Pacemakers and Implantable Cardioverter-Defibrillators*

**John R. Teerlink, MD**

Professor of Medicine  
School of Medicine  
University of California, San Francisco  
Director, Heart Failure  
Director, Echocardiography  
San Francisco Veterans Affairs Medical Center  
San Francisco, California  
*Diagnosis and Management of Acute Heart Failure*

**David J. Tester, BS**

Associate Professor of Medicine  
Mayo Clinic College of Medicine and Science  
Senior Research Technologist II-Supervisor,  
Windland Smith Rice Sudden Death Genomics Laboratory  
Mayo Clinic  
Rochester, Minnesota  
*Genetics of Cardiac Arrhythmias*

**Judith Therrien, MD**

Associate Professor  
Department of Medicine  
McGill University  
Montreal, Quebec, Canada  
*Congenital Heart Disease in the Adult and Pediatric Patient*

**James D. Thomas, MD**

Director, Center for Heart Valve Disease  
Director, Academic Affairs  
Bluhm Cardiovascular Institute  
Northwestern Memorial Hospital  
Professor of Medicine  
Northwestern University Feinberg School of Medicine  
Chicago, Illinois  
*Mitral Valve Disease*

**Paul D. Thompson, MD**

Chief of Cardiology  
Hartford Hospital  
Hartford, Connecticut  
*Exercise and Sports Cardiology*  
*Exercise-Based, Comprehensive Cardiac Rehabilitation*

**Gordon F. Tomaselli, MD**

Michel Mirowski MD Professor of Cardiology  
Professor of Medicine  
Chief, Division of Cardiology  
Johns Hopkins School of Medicine  
Baltimore, Maryland  
*Approach to the Patient with Cardiac Arrhythmias*  
*Mechanisms of Cardiac Arrhythmias*  
*Diagnosis of Cardiac Arrhythmias*  
*Therapy for Cardiac Arrhythmias*  
*Ventricular Arrhythmias*  
*Neurologic Disorders and Cardiovascular Disease*

**James E. Udelson, MD**

Professor of Medicine and Radiology  
Tufts University School of Medicine  
Chief, Division of Cardiology  
The CardioVascular Center  
Tufts Medical Center  
Boston, Massachusetts  
*Nuclear Cardiology*  
*Appropriate Use Criteria: Multimodality Imaging in Stable Ischemic Heart Disease and Heart Failure*

**Viola Vaccarino, MD, PhD**

Wilton Looney Chair of Cardiovascular Research  
Professor and Chair, Department of Epidemiology  
Rollins School of Public Health  
Professor, Department of Medicine  
Emory University  
Atlanta, Georgia  
*Psychiatric and Behavioral Aspects of Cardiovascular Disease*

**Ronald G. Victor, MD**

Burns and Allen Chair in Cardiology Research  
Director, Hypertension Center of Excellence  
Associate Director, Cedars-Sinai Heart Institute  
Cedars-Sinai Medical Center  
Los Angeles, California  
*Systemic Hypertension: Mechanisms and Diagnosis*  
*Systemic Hypertension: Management*

**Paul J. Wang, MD**

Professor of Medicine  
Director, Arrhythmia Service  
Stanford University  
Stanford, California  
*Pacemakers and Implantable Cardioverter-Defibrillators*

**Carole A. Warnes, MD**

Professor of Medicine  
Consultant in Cardiovascular Diseases and Internal Medicine  
Pediatric Cardiology  
Director of Adult Congenital Heart Disease Clinic  
Mayo Clinic  
Rochester, Minnesota  
*Pregnancy and Heart Disease*

**David D. Waters, MD**

Professor Emeritus  
Division of Cardiology  
San Francisco General Hospital  
Department of Medicine  
University of California, San Francisco  
San Francisco, California  
*Cardiovascular Abnormalities in HIV-Infected Individuals*

**Gary D. Webb, MDCM**

Consultant to the Cincinnati Adult Congenital Heart Program  
Cincinnati, Ohio  
*Congenital Heart Disease in the Adult and Pediatric Patient*

**Jeffrey I. Weitz, MD**

Professor of Medicine and Biochemistry  
McMaster University  
Canada Research Chair in Thrombosis  
Executive Director, Thrombosis and Atherosclerosis Research Institute  
Hamilton, Ontario, Canada  
*Hemostasis, Thrombosis, Fibrinolysis, and Cardiovascular Disease*

**Nanette Kass Wenger, MD**

Professor of Medicine (Cardiology) Emeritus  
Emory University School of Medicine  
Consultant, Emory Heart and Vascular Center  
Atlanta, Georgia  
*Cardiovascular Disease in the Elderly*

**Walter R. Wilson, MD**

Professor of Medicine  
Mayo Clinic College of Medicine  
Rochester, Minnesota  
*Cardiovascular Infections*

**Stephen D. Wiviott, MD**

Investigator, TIMI Study Group  
Cardiovascular Medicine Division  
Brigham and Women's Hospital  
Associate Professor  
Cardiovascular Medicine  
Harvard Medical School  
Boston, Massachusetts  
*Guidelines: Management of Patients with ST-Elevation Myocardial Infarction*

**Joseph C. Wu, MD, PhD**

Director, Stanford Cardiovascular Institute  
Simon H. Stertzer Professor of Medicine and Radiology  
Stanford University School of Medicine  
Stanford, California  
*Cardiovascular Regeneration and Repair*



**Justina C. Wu, MD, PhD**

Assistant Professor of Medicine  
Harvard Medical School  
Associate Director, Noninvasive Cardiology  
Brigham and Women's Hospital  
Boston, Massachusetts  
*Echocardiography*

**Syed Wamique Yusuf, MD**

Associate Professor of Medicine  
Department of Cardiology  
University of Texas MD Anderson Cancer Center  
Houston, Texas  
*Tumors Affecting the Cardiovascular System*

**Michael R. Zile, MD**

Charles Ezra Daniel Professor of Medicine  
Division of Cardiology  
Medical University of South Carolina  
Chief, Division of Cardiology  
Ralph H. Johnson Veterans Affairs Medical Center  
Charleston, South Carolina  
*Heart Failure with a Preserved Ejection Fraction*

**Douglas P. Zipes, MD**

Distinguished Professor  
Division of Cardiology and the Krannert Institute of Cardiology  
Indiana University School of Medicine  
Indianapolis, Indiana  
*Approach to the Patient with Cardiac Arrhythmias*  
*Mechanisms of Cardiac Arrhythmias*  
*Diagnosis of Cardiac Arrhythmias*  
*Therapy for Cardiac Arrhythmias*  
*Supraventricular Arrhythmias*  
*Atrial Fibrillation: Clinical Features, Mechanisms, and Management*  
*Ventricular Arrhythmias*  
*Bradyarrhythmias and Atrioventricular Block*  
*Pacemakers and Implantable Cardioverter-Defibrillators*  
*Hypotension and Syncope*  
*Neurologic Disorders and Cardiovascular Disease*



# Preface

This is the 11th edition of the classic textbook, *Heart Disease: A Textbook Of Cardiovascular Medicine*, that Dr. Eugene Braunwald began almost 40 years ago. The editors are pleased and honored to dedicate this edition to him for his extraordinary contributions to the discipline of cardiology, especially this textbook and its companions, and for his unique concept of creating a “living textbook.”

In the past several decades, cardiology has advanced at a breakneck pace on many fronts. Knowledge of the diagnosis and management of patients with heart disease, as well as understanding of responsible mechanisms and preventive approaches, advance daily. Genetics, molecular biology and pharmacology, imaging, catheter-based therapy, and cardiac repair are only a sampling of what we encounter daily.

This constant flow of innovative research has generated a proliferation of new cardiovascular journals, cumulatively publishing an unprecedented amount of information. With the rapidly changing cardiovascular knowledge base, an authoritative textbook like *Heart Disease* to which readers can turn, confident that the statements are as accurate and up-to-date as possible, offers even greater value.

As with each edition of this reference work, international experts — household names to many readers — have totally revised every chapter. In addition, 14 new chapters have been added to recognize the ever-expanding role of cardiology into areas such as oncology, chronic lung disease, environmental toxins, catheter-based treatments of congenital heart disease, and other topics. Some sections have been revised for clarity, such as arrhythmias; some have been expanded, such as diseases of heart valves; others have had a shift of emphasis, such as congenital heart disease in the adult. Finally, to maintain vitality of standard topics, new authors have replaced more than a third of those who have tirelessly written for previous editions, in chapters on ethics, personalized and precision medicine, imaging, obesity, diabetes, sleep-disordered breathing, autonomic nervous system, and other areas.

In the preface for the 10th edition of *Heart Disease*, we emphasized that the online version contained audio, video, and written information not available in the print edition. We have continued and expanded this practice. To put this 11th edition in perspective, it contains more than 2700 illustrations and 565 tables, while maintaining the number of printed pages near 2000. The eBook includes an additional 400 illustrations, 60 tables, and 300 videos.

We have divided the book into 11 sections, including fundamentals of cardiovascular disease; genetics and personalized medicine; evaluation of the patient; heart failure; arrhythmias, sudden death, and syncope; preventive cardiology; atherosclerotic cardiovascular disease; diseases of heart valves; diseases of the myocardium, pericardium, and pulmonary vasculature bed; cardiovascular disease in special populations; and cardiovascular disease and disorders of other organs.

We have continued the tradition of including practice guidelines, and have written the text for all levels of learners and for all specialties in cardiology. As before, information not directly relevant to practicing clinicians is presented in smaller font. More detailed information on many topics can be found in the companions to this book:

*Cardiovascular Intervention* by Deepak L. Bhatt  
*Cardiovascular Therapeutics* by Elliott Antman and Marc Sabatine  
*Chronic Coronary Artery Disease* by James DeLemos and Torbjorn Omland  
*Clinical Arrhythmology and Electrophysiology* by Ziad Issa, John Miller, and Douglas Zipes  
*Clinical Lipidology* by Christie Ballantyne  
*Diabetes in Cardiovascular Medicine* by Darren McGuire and Nikolaus Marx  
*Heart Failure* by Michael Felker and Douglas Mann  
*Hypertension* by George Bakris and Matthew Sorrentino  
*Mechanical Circulatory Support* by Robert Kormos and Leslie Miller  
*Myocardial Infarction* by David Morrow  
*Preventive Cardiology* by Roger Blumenthal, JoAnn Foody, and Nathan Wong  
*Valvular Heart Disease* by Catherine Otto and Robert Bonow  
*Vascular Medicine* by Marc Creager, Joshua Beckman, and Joseph Loscalzo  
*Braunwald's Heart Disease Review and Assessment* by Leonard Lilly  
*Atlas of Cardiovascular CT* by Allen Taylor  
*Atlas of Cardiovascular MR* by Christopher Kramer and W Greg Hundley  
*Atlas of Nuclear Cardiology* by Amil Iskandrian and Ernest Garcia

In keeping with the revitalization theme noted above, one of us (DPZ) will be leaving after this edition. Beginning with the 2nd edition of *Heart Disease* in 1984, Dr. Zipes has written the arrhythmia section and, in more recent editions, with co-authors, and has co-edited *Heart Disease* since the 6th edition. Gordon F. Tomaselli will be his very capable replacement.

The editors and authors, along with the Elsevier staff, have endeavored to make *Heart Disease* the go-to source for current cardiology knowledge, maintaining the high standards Dr. Braunwald set many years ago. We hope readers will enjoy reading this edition and learn from it, as we all strive to improve patient care, our ultimate goal.

**Douglas P. Zipes**  
**Peter Libby**  
**Robert O. Bonow**  
**Douglas L. Mann**  
**Gordon F. Tomaselli**



# Preface to the First Edition

Cardiovascular disease is the greatest scourge affecting the industrialized nations. As with previous scourges — bubonic plague, yellow fever, and small pox — cardiovascular disease not only strikes down a significant fraction of the population without warning but also causes prolonged suffering and disability in an even larger number. In the United States alone, despite recent encouraging declines, cardiovascular disease is still responsible for almost 1 million fatalities each year and more than half of all deaths; almost 5 million persons afflicted with cardiovascular disease are hospitalized each year. The cost of these diseases in terms of human suffering and material resources is almost incalculable.

Fortunately, research focusing on the prevention, causes, diagnosis, and treatment of heart disease is moving ahead rapidly. Since the early part of the twentieth century, clinical cardiology has had a particularly strong foundation in the basic sciences of physiology and pharmacology. More recently, the disciplines of molecular biology, genetics, developmental biology, biophysics, biochemistry, experimental pathology and bioengineering have also begun to provide critically important information about cardiac function and malfunction.

In the past 25 years, in particular, we have witnessed an explosive expansion of our understanding of the structure and function of the cardiovascular system—both normal and abnormal—and of our ability to evaluate these parameters in the living patient, sometimes by means of techniques that require penetration of the skin but also with increasing accuracy, by noninvasive methods. Simultaneously, remarkable progress has been made in preventing and treating cardiovascular

disease by medical and surgical means. Indeed, in the United States, a steady reduction in mortality from cardiovascular disease during the past decade suggests that the effective application of this increased knowledge is beginning to prolong human life span, the most valued resource on earth.

To provide a comprehensive, authoritative text in a field that has become as broad and deep as cardiovascular medicine, I enlisted the aid of a number of able colleagues. However, I hoped that my personal involvement in the writing of about half of the book would make it possible to minimize the fragmentation, gaps, inconsistencies, organizational difficulties, and impersonal tone that sometimes plague multiauthored texts. Although *Heart Disease: A Textbook of Cardiovascular Medicine* is primarily a clinical treatise and not a textbook of fundamental cardiovascular science, an effort has been made to explain, in some detail, the scientific bases of cardiovascular diseases.

To the extent that this book proves useful to those who wish to broaden their knowledge of cardiovascular medicine and thereby aids in the care of patients afflicted with heart disease, credit must be given to the many talented and dedicated persons involved in its preparation. I offer my deepest appreciation to my fellow contributors for their professional expertise, knowledge, and devoted scholarship, which has so enriched this book. I am deeply indebted to them for their cooperation and willingness to deal with a demanding editor.

**Eugene Braunwald**  
1980



# Video Contents

## 10 History and Physical Examination: An Evidence-Based Approach, 83

- 10.1 V wave
- 10.2 Kussmaul sign
- 10.3 Precordial diastolic gallop

## 14 Echocardiography, 174

- 14.1 Mirror artifact
- 14.2 Four-dimensional transesophageal echocardiogram of aortic and mitral valves
- 14.3 Echo contrast demonstrating pseudoaneurysm at left ventricular apex
- 14.4 Left anterior descending artery infarct
- 14.5 Right ventricle and inferior myocardial infarction
- 14.6 Flail anterior mitral valve
- 14.7 Flail anterior mitral valve with color Doppler showing severe mitral regurgitation
- 14.8 Anteroseptal ventricular septal defect
- 14.9 Inferoseptal ventricular septal defect
- 14.10 Left ventricular pseudoaneurysm
- 14.11 Hemopericardium
- 14.12 Giant left ventricular aneurysm
- 14.13 Takotsubo cardiomyopathy with left ventricular thrombus
- 14.14 Sarcoidosis
- 14.15 Ischemic cardiomyopathy with mitral regurgitation
- 14.16 Functional mitral regurgitation as shown from the left atrial aspect
- 14.17 Hypertrophic obstructive cardiomyopathy
- 14.18 Hypertrophic obstructive cardiomyopathy
- 14.19 Apical hypertrophic cardiomyopathy with apical aneurysm
- 14.20 Left ventricular noncompaction
- 14.21 Arrhythmogenic cardiomyopathy
- 14.22 Amyloid heart
- 14.23 Löffler endocarditis
- 14.24 Positive stress echocardiogram for left anterior descending artery ischemia
- 14.25 Positive stress echocardiogram for inferior ischemia and ischemic mitral regurgitation
- 14.26 Normal mitral valve, by 4D transesophageal echocardiography
- 14.27 Rheumatic mitral stenosis
- 14.28 Rheumatic mitral stenosis viewed from left ventricular aspect, by 3D transesophageal echocardiography
- 14.29 Bileaflet mitral valve prolapse
- 14.30 Bicuspid aortic valve, short-axis view
- 14.31 Bicuspid aortic valve, long-axis view
- 14.32 Unicuspid aortic valve
- 14.33 Quadricuspid aortic valve
- 14.34 Tricuspid stenosis
- 14.35 Carcinoid tricuspid valve
- 14.36 Pulmonic stenosis
- 14.37 Normal bileaflet mechanical mitral prosthesis, by 4D transesophageal echocardiography
- 14.38 Rocking aortic valve bioprosthesis
- 14.39 Thrombosed bileaflet mechanical mitral prosthesis
- 14.40 Tamponade with right atrial inversion
- 14.41 Tamponade with right ventricular outflow tract inversion
- 14.42 Constriction with respirophasic septal shift
- 14.43 Aortic dissection in a Marfan patient
- 14.44 Aortic dissection and severe aortic regurgitation in a Marfan patient
- 14.45 Aortic dissection with flap prolapsing back through aortic valve on transesophageal echocardiography
- 14.46 Aortic dissection showing site of perforation on transesophageal echocardiography
- 14.47 Deep venous thrombus in transit through right atrium
- 14.48 McConnell sign of pulmonary embolus
- 14.49 Vegetation on a rheumatic mitral valve
- 14.50 Abscess around a bicuspid aortic valve
- 14.51 Left atrial myxoma
- 14.52 Papillary fibroelastoma on aortic valve
- 14.53 Spontaneous echo contrast ("smoke") in left atrial appendage on transesophageal echocardiography
- 14.54 Left atrial thrombus and spontaneous echo contrast s/p MV repair
- 14.55 Patent foramen ovale bubble study and interatrial septal aneurysm
- 14.56 MitraClip, as viewed on 4D transesophageal echocardiography

## 16 Nuclear Cardiology, 261

- 16.1 Rubidium PET imaging
- 16.2 FDG PET imaging

## 17 Cardiovascular Magnetic Resonance Imaging, 301

- 17.1 Cine CMR imaging of myocardial infarction complications
- 17.2 CMR imaging of ischemia and infarct extent
- 17.3 Quantitation of myocardial iron content
- 17.4 Myocardial rupture after acute inferior myocardial infarction
- 17.5 Severe left anterior descending arterial stenosis
- 17.6 Mitral valve anomaly in hypertrophic cardiomyopathy



- 17.7 Microvascular dysfunction in a patient with hypertrophic cardiomyopathy
- 17.8 Ventricular tachycardia and syncope
- 17.9 Takotsubo cardiomyopathy
- 17.10 Chronic constrictive pericarditis with pericardial adhesions post radiation
- 17.11 Atrial septal defect
- 17.12 Vector flow lines in the normal aorta
- 17.13 Abnormal flow patterns
- 17.14 Cine imaging of large mass attached to mitral valve
- 17.15 Myocardial infarction and coronary stenosis

## 19 Cardiac Catheterization, 348

- 19.1 Radial artery catheterization using Seldinger technique
- 19.2 Right heart catheterization via 7F sheath in right internal jugular vein
- 19.3 Left ventriculogram of extensive regional wall motion abnormalities
- 19.4 Left ventriculogram of mild-moderate mitral regurgitation (grade I-II)
- 19.5 Left ventriculogram of ventricular septal defect
- 19.6 Aortogram of moderate aortic regurgitation, Sellers grade II
- 19.7 Aortogram of De Bakey type II dissection of the ascending aorta
- 19.8 Right ventriculogram of patient with pulmonary valve stenosis

## 34 Mechanisms of Cardiac Arrhythmias, 619

- 34.1 Simulation of anterograde conduction through the atrioventricular node
- 34.2 Simulation of fast-slow reentry using an electroanatomical model
- 34.3 Posterior left atrial activation during atrial fibrillation
- 34.4 Ventricular fibrillation spiral wave activity

## 35 Diagnosis of Cardiac Arrhythmias, 648

- 35.1 Focal atrial tachycardia
- 35.2 Macroreentrant right atrial tachycardia following atriotomy for repair of atrial septal defect

## 36 Therapy for Cardiac Arrhythmias, 670

- 36.1 Macroreentrant left atrial tachycardia after pulmonary vein isolation
- 36.2 Macroreentrant left atrial tachycardia after pulmonary vein isolation

## 62 Percutaneous Coronary Intervention, 1271

- 62.1 Air injected down the right coronary artery
- 62.2 Three coronary arteries off the right coronary cusp

## 63 Diseases of the Aorta, 1295

- 63.1 Echocardiogram of a patient with Marfan syndrome
- 63.2 Transesophageal echocardiogram of bicuspid aortic valve and dissection flap
- 63.3 Acute type A aortic dissection complicating a massive aortic root aneurysm

- 63.4 Transthoracic echocardiogram of the root phenotype of a bicuspid aortic valve
- 63.5 Transesophageal echocardiogram of dilated aortic root
- 63.6 Acute type A aortic dissection complicated by severe aortic regurgitation
- 63.7 Transesophageal echocardiogram of acute type A aortic dissection
- 63.8 Color flow Doppler of acute type A aortic dissection
- 63.9 Transesophageal echocardiogram of acute type A aortic dissection with prolapse of dissection flap
- 63.10 Color flow transesophageal echocardiogram of severe aortic regurgitation due to acute type A aortic dissection
- 63.11 Color flow transesophageal echocardiogram of severe aortic regurgitation due to massive aortic root aneurysm
- 63.12 Transthoracic echocardiogram of type A aortic dissection
- 63.13 Transthoracic echocardiogram of patient presenting with severe chest pain and near syncope
- 63.14 Transthoracic echocardiogram (subcostal view) of patient with chest pain demonstrating acute aortic dissection
- 63.15 Transesophageal echocardiogram of highly mobile dissection flap
- 63.16 Transesophageal echocardiogram of acute type A aortic dissection
- 63.17 Transesophageal echocardiogram of acute type A aortic dissection
- 63.18 Acute type A aortic dissection
- 63.19 Type A aortic dissection with dissection flap originating in the aortic root
- 63.20 Transesophageal echocardiogram of type A intramural hematoma of the aorta
- 63.21 Transesophageal echocardiogram of an intramural hematoma of the aorta

## 66 Treatment of Noncoronary Obstructive Vascular Disease, 1365

- 66.1 Diagnostic angiography
- 66.2 Distal superficial femoral artery
- 66.3 Wire advancement through superficial femoral artery
- 66.4 Percutaneous transluminal angioplasty of the superficial femoral artery
- 66.5 Angiography following percutaneous transluminal angioplasty
- 66.6 Angiography following first stent insertion
- 66.7 Angiography of the more proximal lesion
- 66.8 Angiography following second stent insertion
- 66.9 Post-stent dilation angiography
- 66.10 Post-stent angiography

## 68 Aortic Valve Disease, 1389

- 68.1 Level of outflow obstruction
- 68.2 Left ventricular dilation and increased sphericity with chronic severe aortic regurgitation
- 68.3 Mild aortic regurgitation



- 68.4 Vena contracta measurements
- 68.5 Imaging findings in severe aortic regurgitation
- 68.6 Severe aortic regurgitation
- 68.7 Transesophageal echocardiography of a stenotic bicuspid aortic valve
- 68.8 Bicuspid aortic valve

## 69 Mitral Valve Disease, 1415

- 69.1 Mild rheumatic mitral stenosis
- 69.2 Planimetry of mitral valve area
- 69.3 Mitral stenosis jet on color-flow Doppler imaging
- 69.4 Three-dimensional transesophageal echocardiography of mitral stenosis
- 69.5 Three-dimensional visualization of rheumatic mitral stenosis
- 69.6 Spontaneous left atrial contrast
- 69.7 Transesophageal echocardiography-guided balloon mitral commissurotomy
- 69.8 Mitral valve morphology
- 69.9 Normal degree of mitral regurgitation
- 69.10 Mitral valve prolapse
- 69.11 Flail mitral valve leaflet
- 69.12 Mitral leaflet flail
- 69.13 Functional mitral regurgitation
- 69.14 Anteriorly directed mitral regurgitation on transesophageal echocardiography
- 69.15 Posteriorly directed mitral regurgitation on transesophageal echocardiography
- 69.16 Bileaflet prolapse and late systolic mitral regurgitation
- 69.17 Multiple mitral regurgitation jets on transesophageal echocardiography
- 69.18 Three-dimensional image of a mitral valve
- 69.19 Radiation-induced aortic and mitral stenosis
- 69.20 Secondary mitral regurgitation
- 69.21 Proximal isovelocity surface area imaging

## 70 Tricuspid, Pulmonic, and Multivalvular Disease, 1445

- 70.1 Cafergot-induced tricuspid valve disease
- 70.2 Tricuspid stenosis

## 71 Prosthetic Heart Valves, 1455

- 71.1 Transesophageal echocardiographic view of obstructed mitral bileaflet mechanical valve
- 71.2 Transthoracic echocardiographic parasternal long-axis view of stented bioprosthetic valve
- 71.3 Transthoracic color Doppler echocardiographic parasternal long-axis view of obstructive valve thrombosis in balloon transcatheter aortic valve
- 71.4 Transthoracic color Doppler echocardiographic apical three-chamber view of two paravalvular regurgitant jets in a transcatheter aortic valve

## 75 Congenital Heart Disease in the Adult and Pediatric Patient, 1519

- 75.1 Anomalous origin of left coronary artery from pulmonary artery
- 75.2 Anomalous origin of left coronary artery from pulmonary artery

- 75.3 Anomalous left coronary artery originating from right pulmonary artery
- 75.4 Scimitar syndrome
- 75.5 Scimitar syndrome
- 75.6 Parachute mitral valve
- 75.7 Tricuspid atresia and dextrocardia
- 75.8 Normal heart
- 75.9 Atrioventricular discordance
- 75.10 Atrioventricular and ventriculoarterial discordance
- 75.11 Double-inlet left ventricle
- 75.12 Double-inlet left ventricle
- 75.13 Double-inlet left ventricle
- 75.14 Double-inlet left ventricle
- 75.15 Double-inlet left ventricle
- 75.16 Double-inlet left ventricle
- 75.17 Double-inlet left ventricle
- 75.18 Double-inlet ventricle with common atrium and common atrioventricular valve
- 75.19 Hypoplastic posterior left ventricle
- 75.20 Superior-inferior ventricles and crisscross heart
- 75.21 Ventricular inversion with common atrioventricular valve and ostium prima defect
- 75.22 Tricuspid atresia
- 75.23 Tricuspid atresia
- 75.24 Hypoplastic right ventricle
- 75.25 Hypoplastic left heart syndrome
- 75.26 Repaired common atrioventricular valve
- 75.27 Repaired common atrioventricular valve
- 75.28 Three-dimensional echocardiography of tricuspid valve, with a hypoplastic mitral valve
- 75.29 Coronary sinus defect
- 75.30 Coronary sinus defect
- 75.31 Anomalous pulmonary venous drainage
- 75.32 Sinus venosus defect
- 75.33 Sinus venosus defect
- 75.34 Amplatzer closure of secundum atrial septal defect
- 75.35 Cause and treatment of platypnea/orthodoxia syndrome
- 75.36 Three-dimensional echocardiography of cleft mitral leaflet
- 75.37 Primum atrial defect
- 75.38 Primum atrial defect
- 75.39 Regurgitant left atrioventricular valve in a primum atrial defect
- 75.40 Unbalanced atrioventricular septal defect
- 75.41 Unbalanced atrioventricular septal defect
- 75.42 Unbalanced atrioventricular septal defect
- 75.43 Doubly committed subarterial ventricular septal defect
- 75.44 Doubly committed subarterial ventricular septal defect
- 75.45 Doubly committed subarterial ventricular septal defect
- 75.46 Perimembranous inlet ventricular septal defect
- 75.47 Perimembranous inlet ventricular septal defect



- 75.48** Perimembranous ventricular septal defect with right ventricular muscle bundles and a small subaortic ridge
- 75.49** Perimembranous ventricular septal defect with right ventricular muscle bundles and small subaortic ridge
- 75.50** Perimembranous ventricular septal defect with right ventricular muscle bundles and small subarterial ridge
- 75.51** Perimembranous ventricular septal defect with right ventricular muscle bundles
- 75.52** Perimembranous ventricular septal defect with right ventricular muscle bundles and small subaortic ridge
- 75.53** Stenotic homograft conduit with stent therapy
- 75.54** Radiofrequency-assisted balloon dilation of atretic pulmonary valve
- 75.55** Calcified homograft conduit with potential coronary compression
- 75.56** Melody valve placement in stenotic homograft conduit
- 75.57** Catheter management of troubled Fontan circulation
- 75.58** Interventional and thrombolytic management of thrombosis in Fontan patient
- 75.59** Catheter management of stenotic left pulmonary artery in Fontan patient
- 75.60** Stent management of kinked Fontan connection
- 75.61** Postoperative view of a palliative Senning procedure
- 75.62** Postoperative view of palliative Senning procedure
- 75.63** Postoperative view of palliative Senning procedure
- 75.64** Postoperative view of palliative Senning procedure
- 75.65** Systemic tricuspid valve coaptation after Senning procedure
- 75.66** Postoperative view of Rastelli procedure
- 75.67** Postoperative view of Rastelli procedure
- 75.68** Rastelli repair of tricuspid valve regurgitation shows moderate tricuspid regurgitation
- 75.69** Moderate systemic tricuspid regurgitation after Senning procedure
- 75.70** Systemic tricuspid regurgitation after Senning procedure
- 75.71** Three-dimensional echocardiography of systemic tricuspid valve after Senning procedure
- 75.72** Interventional therapy of Mustard baffle stenosis and leakage
- 75.73** Poor tricuspid leaflet coaptation
- 75.74** Three-dimensional echocardiography of tricuspid regurgitation
- 75.75** Transesophageal echocardiography of tricuspid regurgitation
- 75.76** Abnormal systemic tricuspid valve in congenitally corrected transposition of the great arteries
- 75.77** Abnormal tricuspid valve in congenitally corrected transposition of the great arteries
- 75.78** Three-dimensional echocardiography of abnormal tricuspid valve in congenitally corrected transposition of the great arteries
- 75.79** Three-dimensional echocardiography of abnormal tricuspid valve in congenitally corrected transposition of the great arteries
- 75.80** Three-dimensional echocardiography of tricuspid regurgitation in congenitally corrected transposition of the great arteries
- 75.81** Stent management of hypoplastic aortic arch
- 75.82** Stent management of adult aortic coarctation
- 75.83** Stent management of complex coarctation repair
- 75.84** Stent management of aortic coarctation
- 75.85** Balloon dilation of critical neonatal aortic stenosis
- 75.86** Fibromuscular subaortic stenosis
- 75.87** Tunnel subaortic stenosis
- 75.88** Three-dimensional echocardiography of fibromuscular subaortic stenosis
- 75.89** Transesophageal echocardiography of congenital mitral stenosis
- 75.90** Transesophageal echocardiography of congenital mitral stenosis and fibromuscular subaortic stenosis
- 75.91** Isolated cleft of the mitral valve
- 75.92** Isolated cleft of the mitral valve
- 75.93** Three-dimensional echocardiography of isolated mitral cleft
- 75.94** Muscular inlet ventricular septal defect
- 75.95** Double-orifice mitral valve
- 75.96** Three-dimensional echocardiography of double-orifice mitral valve
- 75.97** Severe tricuspid regurgitation in congenitally corrected transposition of the great arteries
- 75.98** Ebstein malformation of tricuspid valve
- 75.99** Ebstein malformation of tricuspid valve
- 75.100** Ebstein malformation of tricuspid valve
- 75.101** Valvular pulmonary stenosis
- 75.102** Valvular pulmonary stenosis
- 75.103** Dysplastic pulmonary valve stenosis
- 75.104** Catheter management of neonatal pulmonary atresia with intact ventricular septum
- 75.105** Cor triatriatum
- 75.106** Cor triatriatum
- 75.107** Cor triatriatum
- 75.108** Catheter management of large circumflex artery fistula to left ventricle
- 83 Pericardial Diseases, 1662**
- 83.1** Cine loops of two-dimensional echocardiogram from a patient with cardiac tamponade
- 83.2** Cine MR images in a patient with pericardial effusion and underlying pulmonary hypertension
- 83.3** Cine MR images in a patient with both pericardial and pleural effusions
- 83.4** Cine MR images illustrating septal “bounce” in a patient with constrictive pericarditis
- 83.5** Cine MR images of a patient with constrictive pericarditis before pericardiectomy
- 83.6** Cine MR images of a patient with constrictive pericarditis after pericardiectomy illustrating relief of exaggerated ventricular interaction



# Global Burden of Cardiovascular Disease

THOMAS A. GAZIANO, DORAIRAJ PRABHAKARAN, AND J. MICHAEL GAZIANO

## SHIFTING BURDEN, 1

### EPIDEMIOLOGIC TRANSITIONS, 1

Age of Inactivity and Obesity: a Fifth Phase?, 3

Different Patterns of Epidemiologic Transition, 3

### CURRENT VARIATIONS IN THE GLOBAL BURDEN, 3

High-Income Countries, 5

East Asia and Pacific, 6

Central and Eastern Europe and Central Asia, 6

Latin America and the Caribbean, 7

North Africa and the Middle East, 7

South Asia, 7

Sub-Saharan Africa, 7

### RISK FACTORS, 8

Tobacco, 8

Hypertension, 8

Lipids, 9

Diabetes, 10

Obesity, 12

Diet, 13

Physical Inactivity, 14

Aging Populations, 14

Fetal Influences, 14

Environmental Exposures, 14

### ECONOMIC BURDEN, 15

#### COST-EFFECTIVE SOLUTIONS, 15

Established Cardiovascular Disease Management, 15

Risk Assessment, 15

Policy and Community Interventions, 16

#### SUMMARY AND CONCLUSION, 17

#### REFERENCES, 17

Over the last decade, cardiovascular disease (CVD) has become the leading cause of death worldwide. In 2013, CVD caused an estimated 17.3 million deaths and led to 330 million disability-adjusted life-years (DALYs) lost<sup>1</sup>—about 32% of all deaths and 13% of all DALYs lost that year. Overall, these data represent increases in both absolute numbers and percentages of deaths and DALYs compared with 2010 estimates. As with many high-income countries during the last century, low- and middle-income countries are now experiencing an alarming and accelerating increase in CVD.

This chapter reviews the features of the epidemiologic transitions underlying this shift in CVD morbidity and mortality and evaluates the transition in different regions of the world. A survey of the current burden of risk factors and behaviors associated with CVD includes regional variations and trends. A review of the economic impact of CVD highlights the cost-effectiveness of various strategies to reduce it. The chapter ends with a discussion of the diverse challenges that the increasing burden of CVD poses for various regions of the world, along with potential solutions to this global problem.

## SHIFTING BURDEN

Between 1990 and 2013, deaths from CVD increased from 26% to 32% of all deaths globally, a reflection of the rapid epidemiologic transition, particularly in low- and middle-income countries (LMICs). Although the net percentage of deaths caused by CVD overall has increased, this results from an increase in LMICs and a decline in high-income countries (HICs) (**Fig. 1.1**). CVD now causes the most deaths in all low- and middle-income regions, with the exception of sub-Saharan Africa, where it is the leading cause of death in those older than 45 years. In absolute numbers, CVD causes four to five times as many deaths in LMICs as in HICs. Within the six World Bank–defined low- and middle-income regions, the CVD burden differs vastly (**Fig. 1.2**), with CVD death rates as high as 59% in Eastern Europe and as low as 12% in sub-Saharan Africa. The CVD mortality rate is 38% in HICs.

## EPIDEMIOLOGIC TRANSITIONS

The overall increase in the global burden of CVD and the distinct regional patterns result in part from the “epidemiologic transition,” which includes four basic stages (**Table 1.1**): Pestilence and Famine, Receding Pandemics, Degenerative and Man-Made Diseases, and Delayed Degenerative Diseases.<sup>2,3</sup> Movement through these stages has dramatically shifted the causes of death over the last two centuries, from infectious diseases and malnutrition in the first stage to CVD and cancer in the third and fourth stages. Although the transition through the age of Pestilence and Famine has occurred much later in LMICs, it has also occurred more rapidly, driven largely by the transfer of low-cost agricultural technologies, the overall globalization of world economies, and public health advances.

Humans evolved during the age of **Pestilence and Famine** and have lived with epidemics and hunger for most of recorded history. Before 1900, infectious diseases and malnutrition constituted the most common causes of death in virtually every part of the world, with tuberculosis, pneumonia, and diarrheal diseases accounting for a majority of deaths. These conditions, along with high infant and child mortality rates, resulted in a mean life expectancy of approximately 30 years.

Per capita income and life expectancy increase during the age of **Receding Pandemics** as the emergence of public health systems, cleaner water supplies, and improved food production and distribution combine to reduce deaths from infectious disease and malnutrition. Improvements in medical education follow, and along with other public health changes, contribute to dramatic declines in infectious disease mortality rates. Rheumatic valvular disease, hypertension, and cerebrovascular accident (stroke) cause most CVD. Coronary heart disease (CHD) often occurs at a lower prevalence rate than stroke, and CVD accounts for 10% to 35% of deaths.

During the stage of **Degenerative and Man-Made Diseases**, continued improvements in economic circumstances, combined with urbanization and radical changes in the nature of work-related activities, led to dramatic changes in diet, activity levels, and behaviors such



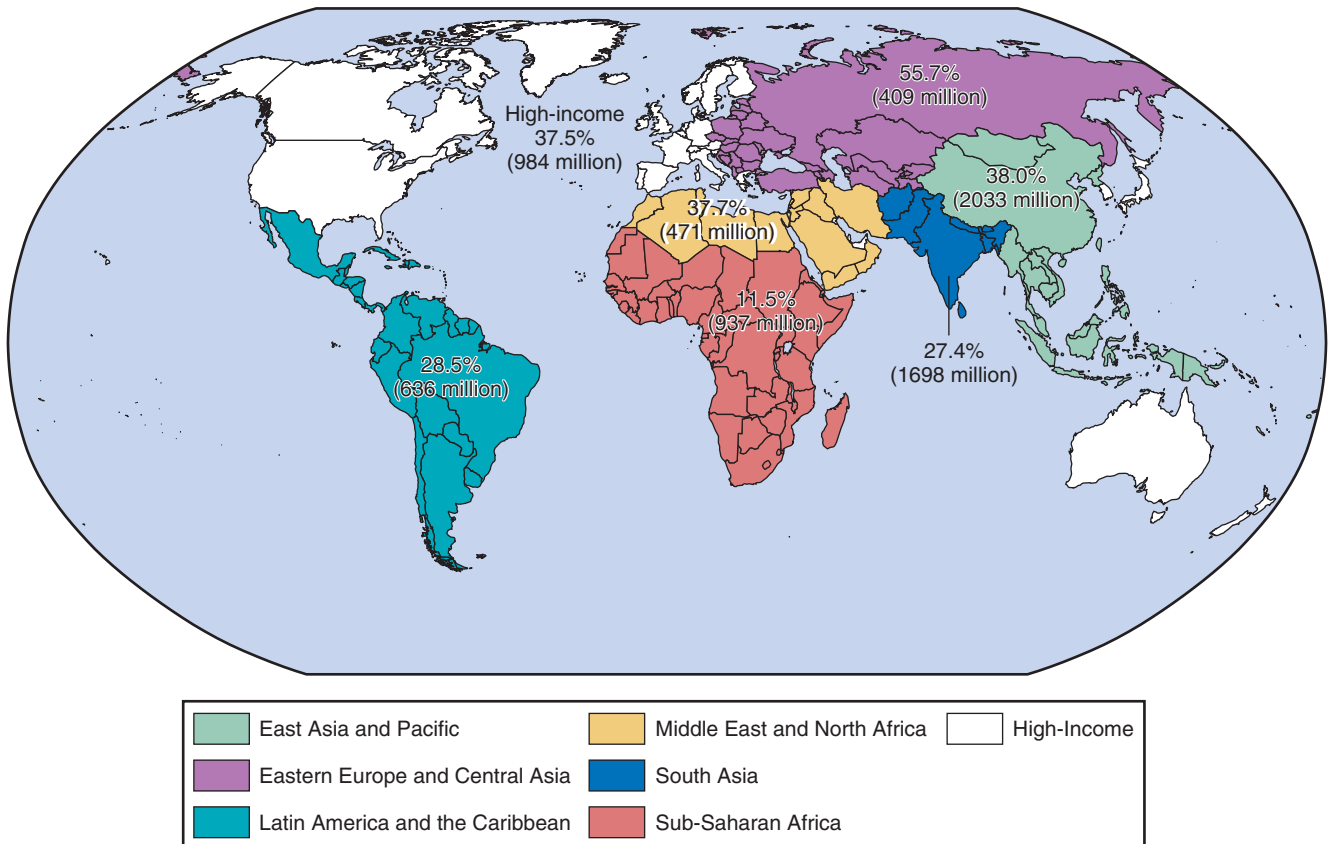


**FIGURE 1.1** Changing pattern of mortality, 1990 to 2013. CVD, Cardiovascular disease; ONC, other noncommunicable diseases; CMNN, communicable, maternal, neonatal, and nutritional diseases; INJ, injury. (From Global Burden of Disease Study 2013. Age-sex specific all-cause and cause-specific mortality, 1990–2013, Seattle: Institute for Health Metrics and Evaluation; 2014.)

as smoking. For example, in the United States, deaths from infectious diseases decreased to fewer than 50 per 100,000 people per year, and life expectancy increased to almost 70 years. The increased availability of foods high in calories, coupled with decreased physical activity, contributes to an increase in atherosclerosis. In this stage, CHD and stroke predominate, and between 35% and 65% of all deaths are related to CVD. Typically, the ratio of CHD to stroke is 2:1 to 3:1.

In the age of **Delayed Degenerative Diseases**, CVD and cancer remain the major causes of morbidity and mortality, but CVD age-adjusted mortality rates decline by almost half, accounting for 25% to 40% of all deaths. Two significant advances have contributed to the decline in CVD mortality rates: new therapeutic approaches and prevention measures targeted at people with or at risk for CVD.<sup>4</sup>

Treatments once considered advanced—including the establishment of emergency medical systems, coronary care units, and the widespread use of new diagnostic and therapeutic technologies such as echocardiography, cardiac catheterization, percutaneous coronary intervention (PCI), bypass surgery, and implantation of pacemakers and defibrillators—have now become the standard of care. Advances in drug development have also yielded major benefits on both acute and chronic outcomes. Efforts to improve the acute management of myocardial infarction (MI) led to the application of lifesaving interventions such as beta-adrenergic blocking agents (beta blockers), PCI, thrombolytics, statins, and angiotensin-converting enzyme (ACE) inhibitors (see Chapters 58 and 59). The widespread use of an “old” drug, aspirin, has also reduced the risk of dying of acute or secondary coronary events. Low-cost pharmacologic treatment for hypertension (see Chapter 47) and the development of highly effective cholesterol-lowering drugs such as statins have also made major contributions to both primary and secondary prevention by reducing CVD deaths (see Chapter 48).



**FIGURE 1.2** Cardiovascular disease deaths as a percentage of all deaths in each region and total regional population, 2013. (From Global Burden of Disease Study 2013: Age-sex specific all-cause and cause-specific mortality, 1990–2013. Seattle: Institute for Health Metrics and Evaluation; 2014; and World Health Organization. Global Health Observatory Data Repository. Demographic and socioeconomic statistics: population data by country. <http://apps.who.int/gho/data/view.main.POP2040?lang=en>.)

**TABLE 1.1** Five Typical Stages of Epidemiologic Transition in CVD Mortality and Types

STAGE	DESCRIPTION	TYPICAL PROPORTION OF DEATHS CAUSED BY CVD (%)	PREDOMINANT TYPES OF CVD
Pestilence and Famine	Predominance of malnutrition and infectious diseases as causes of death; high rates of infant and child mortality; low mean life expectancy.	<10	Rheumatic heart disease, cardiomyopathies caused by infection and malnutrition
Receding Pandemics	Improvements in nutrition and public health lead to decrease in rates of deaths caused by malnutrition and infection; precipitous decline in infant and child mortality rates.	10-35	Rheumatic valvular disease, hypertension, CHD, stroke
Degenerative and Man-Made Diseases	Increased fat and caloric intake and decreased physical activity lead to emergency of hypertension and atherosclerosis; with increased life expectancy, mortality from chronic, noncommunicable diseases exceeds mortality from malnutrition and infectious diseases.	35-65	CHD, stroke
Delayed Degenerative Diseases	CVDs and cancer are the major causes of morbidity and mortality; better treatment and prevention efforts help avoid deaths among those with disease and delay primary events. Age-adjusted CVD mortality declines; CVD affects older and older individuals.	40-50	CHD, stroke, congestive heart failure
Inactivity and Obesity	Increasing prevalence of obesity and diabetes; some slowing of CVD mortality rates in women.	38	

CVD, Cardiovascular disease; CHD, coronary heart disease.

Modified from Omran AR. The epidemiologic transition: a theory of the epidemiology of population change. *Milbank Mem Fund Q* 1981;49:509; and Olshansky SJ, Ault AB. The fourth stage of the epidemiologic transition: the age of delayed degenerative diseases. *Milbank Q* 1986;64:355.

In concert with these advances, public health campaigns have conveyed that certain behaviors increase the risk of CVD and that lifestyle modifications can reduce risk. In this regard, smoking cessation furnishes a model of success. In the United States, for example, 57% of men smoked cigarettes in 1955; in 2012, 20.5% of men smoked. The prevalence of smoking among U.S. women has fallen from 34% in 1965 to 15.8% in 2012.<sup>5</sup> Campaigns beginning in the 1970s dramatically improved the detection and treatment of hypertension in the United States. This intervention likely had an immediate and profound effect on stroke rates and a subtler effect on CHD rates. Public health messages concerning saturated fat and cholesterol had a similar impact on fat consumption and cholesterol levels. Population mean cholesterol levels also declined, from 220 mg/dL in the early 1960s to 192 mg/dL by 2014,<sup>6</sup> with a simultaneous decrease in the prevalence of elevated low-density lipoprotein (LDL) cholesterol.

### Age of Inactivity and Obesity: a Fifth Phase?

Troubling trends in certain risk behaviors and risk factors may foreshadow a new phase of epidemiologic transition, the age of **Inactivity and Obesity**<sup>7</sup> (see Chapters 49 and 50). In many parts of the industrialized world, physical activity continues to decline while total caloric intake increases at alarming rates, resulting in an epidemic of overweight and obesity. Consequently, rates of type 2 diabetes, hypertension, and lipid abnormalities associated with obesity are rising—a particularly evident trend in children.<sup>6</sup> These changes are occurring while measurable improvements in other risk behaviors and risk factors, such as smoking, have slowed. If these trends continue, age-adjusted CVD mortality rates, which have declined over the past several decades in HICs, could plateau, as they have for young women in the United States, or even increase in the coming years. This trend pertains particularly to age-adjusted stroke death rates. This concerning increase in obesity also applies to LMICs.<sup>8</sup>

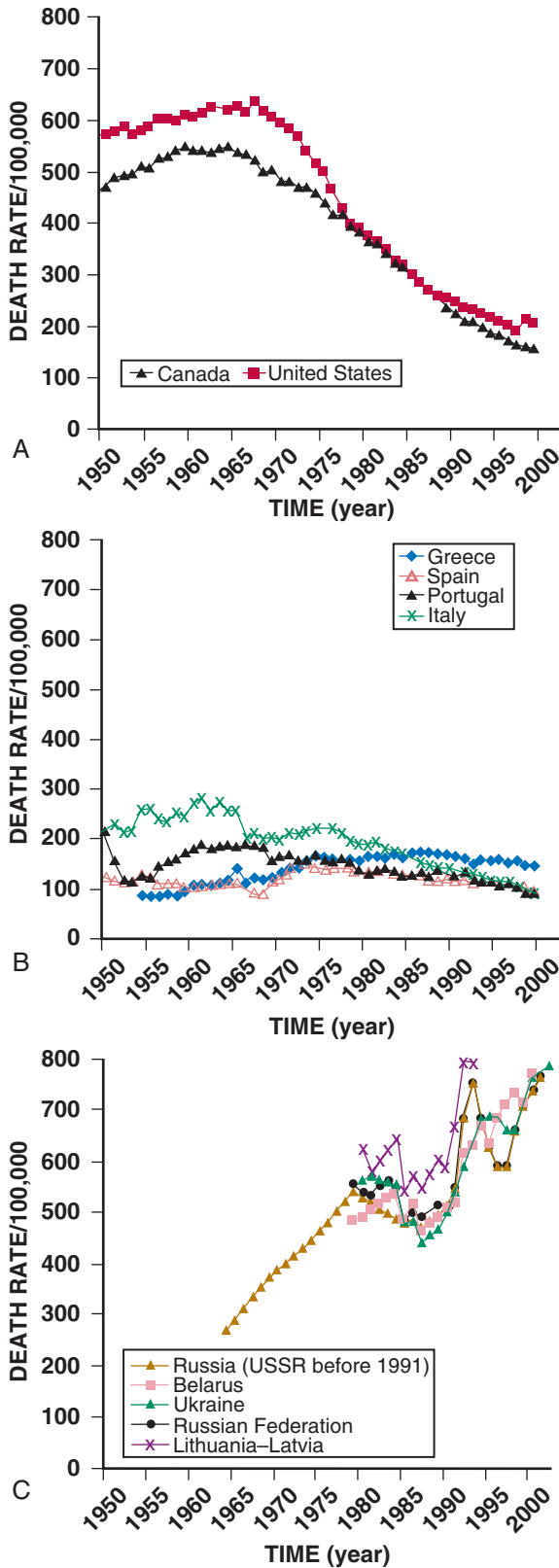
Fortunately, recent trends in the first decade of this century suggest a tapering in the increases in obesity among adults, although the rates remain alarmingly high at almost 34%.<sup>9</sup> Furthermore, continued progress in the development and application of therapeutic advances and other secular changes appear to have offset the effects from the changes in obesity and diabetes; cholesterol levels, for example, continue to decline. Overall, in this decade, age-adjusted mortality has continued to decline at about 3% per year, from a rate of 341 per 100,000 population in 2000 to 223 per 100,000 in 2013.<sup>10</sup>

### Different Patterns of Epidemiologic Transition

The HICs have followed different patterns of the CVD transition, which differ in both peak death rate from CHD and time of transition. Three patterns emerge that rely on data from countries with an established death certification system<sup>11</sup> (Fig. 1.3). One pattern, followed by the United States and Canada, showed a rapid rise and peak in the 1960s and 1970s, followed by a relatively rapid decline through the end of the 2000s. The peak was 300 to 700 CHD deaths per 100,000 population, with current rates between 100 and 200 per 100,000. This pattern also occurred in the Scandinavian countries, the United Kingdom, Ireland, Australia, and New Zealand. A second pattern showed a peak in the same period but a peak CHD death rate of only 100 to 300 per 100,000. Countries such as Portugal, Spain, Italy, France, Greece, and Japan followed this pattern. Some countries did not have the same rapid rate of decline, with slower rates in central European countries (Austria, Belgium, Germany) compared to northern European countries (Finland, Sweden, Denmark, Norway), but with lower peaks of 300 to 350 per 100,000 in the 1960s and 1970s. Some countries appear to display a third pattern of continued rise (particularly many components of the former Soviet Union), and others have yet to see any significant increase, such as many countries in sub-Saharan Africa (excluding South Africa). Latin America has less longitudinal data, but limited data suggest that many of the countries follow the pattern of either Mediterranean or Southern European countries, with peaks between 50 and 300 deaths per 100,000. Whether other LMICs will follow a “classic” pattern of significant increases then rapidly declining rates (as happened in North America, Australia, and northwestern European HICs), a more gradual rise and fall (as in the southern and central European countries), or some other pattern will depend in part on cultural differences, secular trends, and responses at the country level with regard to both public health and treatment infrastructures.

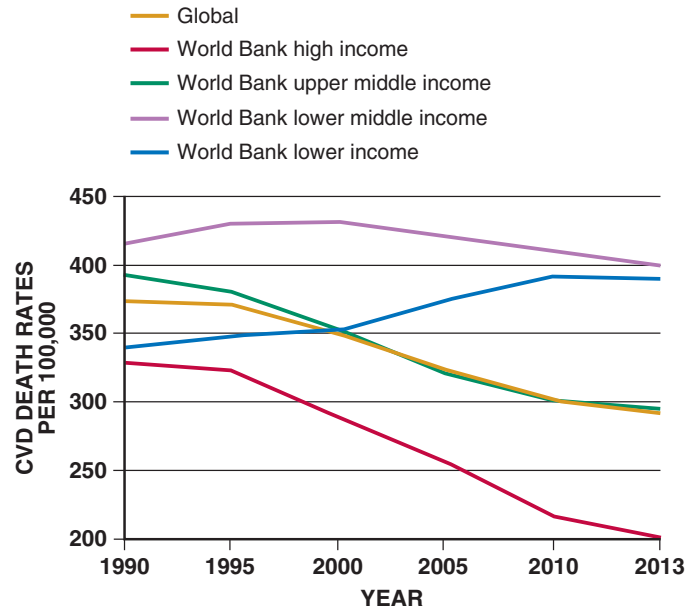
### CURRENT VARIATIONS IN THE GLOBAL BURDEN

Three phenomena impact the various metrics for disease burden. First, population growth increases the overall number of deaths caused by CVD globally. Second, a trend in general aging of the population has shifted the proportion of deaths caused by CVD in most regions as a result of better control of many communicable diseases that



**FIGURE 1.3** Differing coronary heart disease mortality patterns. **A**, Rapid rise and decline. **B**, Mild rise and decline. **C**, Continuing rapid rise. (From Mirzaei M, Truswell A, Taylor R, Leeder SR: Coronary heart disease epidemics: not all the same. *Heart* 2009;95(9):740-6.)

strike those at early ages. Third, prevention of CVD and treatment for those with CVD have both improved, which reduces age-adjusted mortality rates. We rely on data from the Global Burden of Disease (GBD) study data from 2013. Although extensive, data from GBD 2013 has limitations. The availability and reliability of data on cause



**FIGURE 1.4** Cardiovascular disease death rates per 100,000 population from 1990 to 2013, by World Bank income categories. (From Global Burden of Disease Study 2013. Age-sex specific all-cause and cause-specific mortality, 1990–2013. Seattle: Institute for Health Metrics and Evaluation; 2014.)

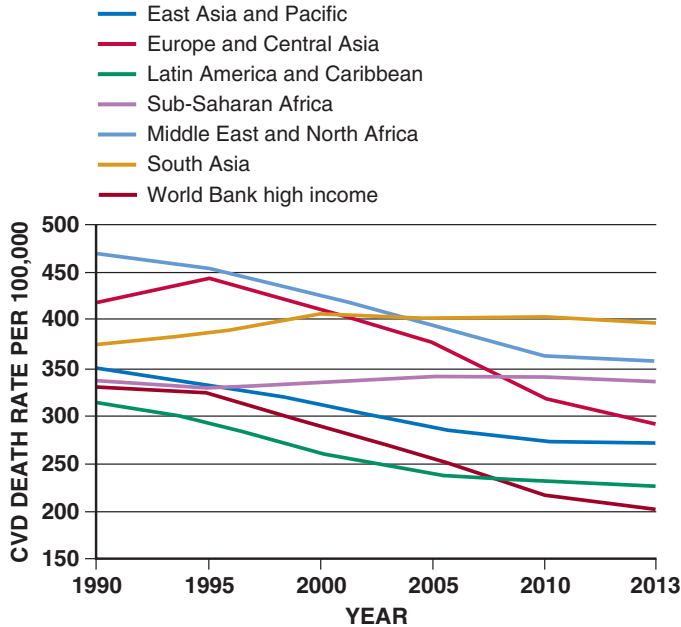
of death, especially in LMICs without standardized protocols, are uncertain.

Globally, CVD deaths increased by 46% between 1990 and 2013. The increase in overall CVD deaths results from both increases in CHD and stroke-related deaths. In 2013, CHD accounted for 15% of all deaths worldwide. The second-ranking cause of death was stroke, at 12% (equally split between ischemic stroke and hemorrhagic stroke). An estimated 14.5 million people died from CHD and stroke, which together accounted for almost a quarter of all deaths worldwide in 2013.<sup>1</sup>

Although still substantial, deaths from communicable, neonatal, and maternal diseases are decreasing worldwide,<sup>1,12</sup> with a 27% decrease between 1990 and 2013. Deaths from noncommunicable diseases increased in the same period. In 2013, CHD accounted for the largest portion of global years of life lost (YLLs) and DALYs. Stroke was the third-ranking contributor to global YLLs and DALYs. On the other hand, in 1990, communicable diseases accounted for the largest portion of both YLLs and DALYs.

Despite the increase in overall CVD deaths, age-adjusted death rates decreased by 21.9% in the same period, from 374 to 292 per 100,000 population, suggesting significant delays in age of occurrence and/or improvements in case-fatality rates. Unfortunately, not all countries appear to share in the reductions. Examination of regional trends is helpful in estimating global trends in the burden of disease, particularly CVD. Because 85% of the world's population lives in LMICs, these countries largely drive global CVD rates. These estimates depend on modeling mortality rates in areas where established death certification-based vital registration systems do not cover an entire country. Even as age-adjusted rates have been falling globally, the pattern is different when assessed by income (Fig. 1.4) or by region (Fig. 1.5).

The magnitude of the peak of the CVD epidemic, and whether the peak has arrived at all, has a great range. Here we describe and highlight trends in the seven regions of the world as defined by the GBD project, which includes HICs as one grouping and divides the remaining LMICs into six geographic regions with a variety of subregions. The East Asia and Pacific, Europe and Central Asia, Latin America and Caribbean, and Middle East and North Africa Regions all saw declines in age-adjusted CVD mortality from 1990 to 2013. Sub-Saharan Africa had little change in its age-adjusted CVD mortality rates. South Asia was the only region that experienced a significant increase in the age-adjusted mortality rates.



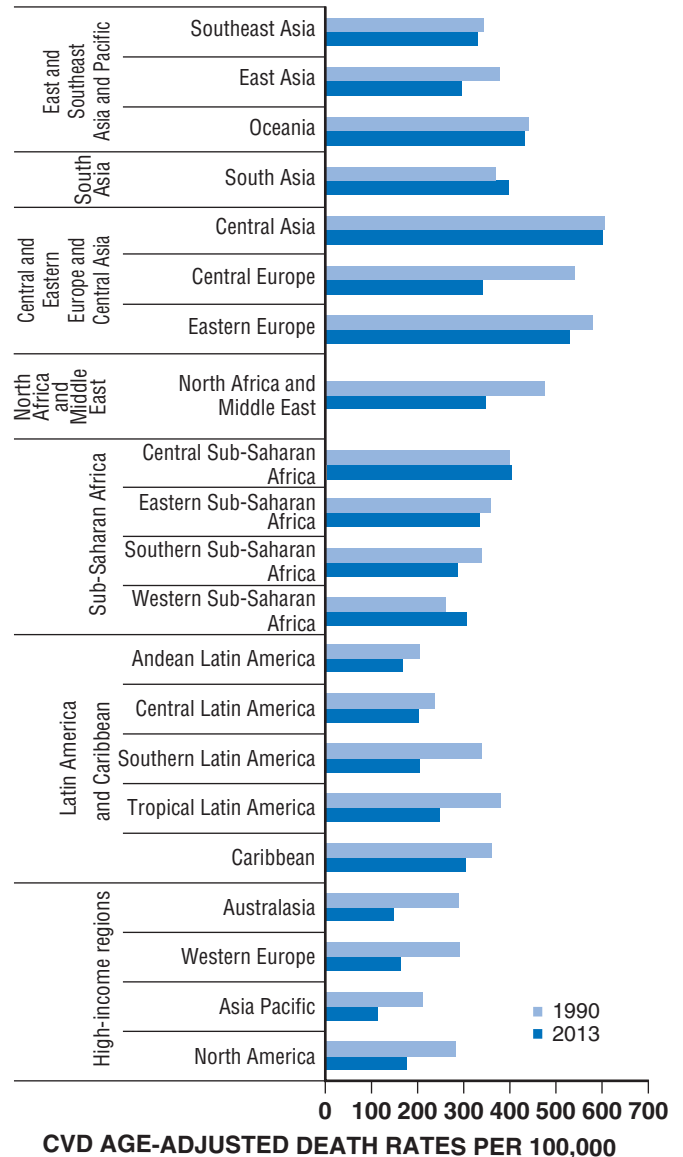
**FIGURE 1.5** Cardiovascular disease death rates per 100,000 population from 1990 to 2013 in low- and middle-income countries by region, compared to World Bank high-income countries. (From Global Burden of Disease Study 2013. Age-sex specific all-cause and cause-specific mortality, 1990–2013. Seattle: Institute for Health Metrics and Evaluation; 2014.)

Much of the variation appears to relate to income, which is one proxy for the stages of the epidemiologic transition. Looking at age-adjusted CVD death rates by income reveals the different trends over the last two decades. In lower-income regions the death rates have increased from 340 per 100,000 in 1990 to 390 per 100,000 in 2013. Lower middle-income countries saw a small increase (416 to 432 per 100,000 deaths), followed by a decline to 400 per 100,000 population. Upper middle-income countries saw a 25% decline, from 392 per 100,000 in 1990 to 296 per 100,000. High-income countries had a nearly 37% decline, from 330 to 202 CVD deaths per 100,000.

The LMICs have a high degree of heterogeneity with respect to the phase of the epidemiologic transition. First, LMIC subregions differ by age-adjusted CVD death rates, as well as by trends over the last 20 years (Fig. 1.6). CVD mortality rates are increasing in most LMICs but are decreasing in HICs. Next, low- and middle-income subregions are unique, as illustrated by the different CVD disease rates by cause in each region (Fig. 1.7). Lastly, in the East Asia and Pacific and sub-Saharan Africa regions, stroke still exceeds CHD as a cause of CVD death. Hypertensive heart disease is the largest single contributor among remaining causes of CVD morbidity and mortality.

Variability in disease prevalence among various regions likely results from multiple factors. First, the countries are in various phases of the epidemiologic transition described earlier. Second, the regions may have cultural and genetic differences that lead to varying levels of CVD risk. For example, per capita consumption of dairy products (and thus consumption of saturated fat) is much higher in India than in China, although it is rising in both countries. Third, certain additional competing pressures exist in some regions, such as war or infectious diseases (HIV/AIDS) in sub-Saharan Africa.

Because CHD affects a younger population in LMICs, the number of deaths is increased in the working population. For some LMICs, the severity of the epidemiologic transition has appeared to follow a reverse social gradient, with members of lower socioeconomic groups having the greatest rates of CHD and the highest levels of various risk factors. Unfortunately, reductions in risk factors do not follow the same trend. Compared with people in the upper and middle socioeconomic strata, those in the lowest stratum are less likely to acquire and apply information on risk factors and behavior modifications or to have access to advanced treatment. Consequently, CVD mortality rates decline later among those of lower socioeconomic status.

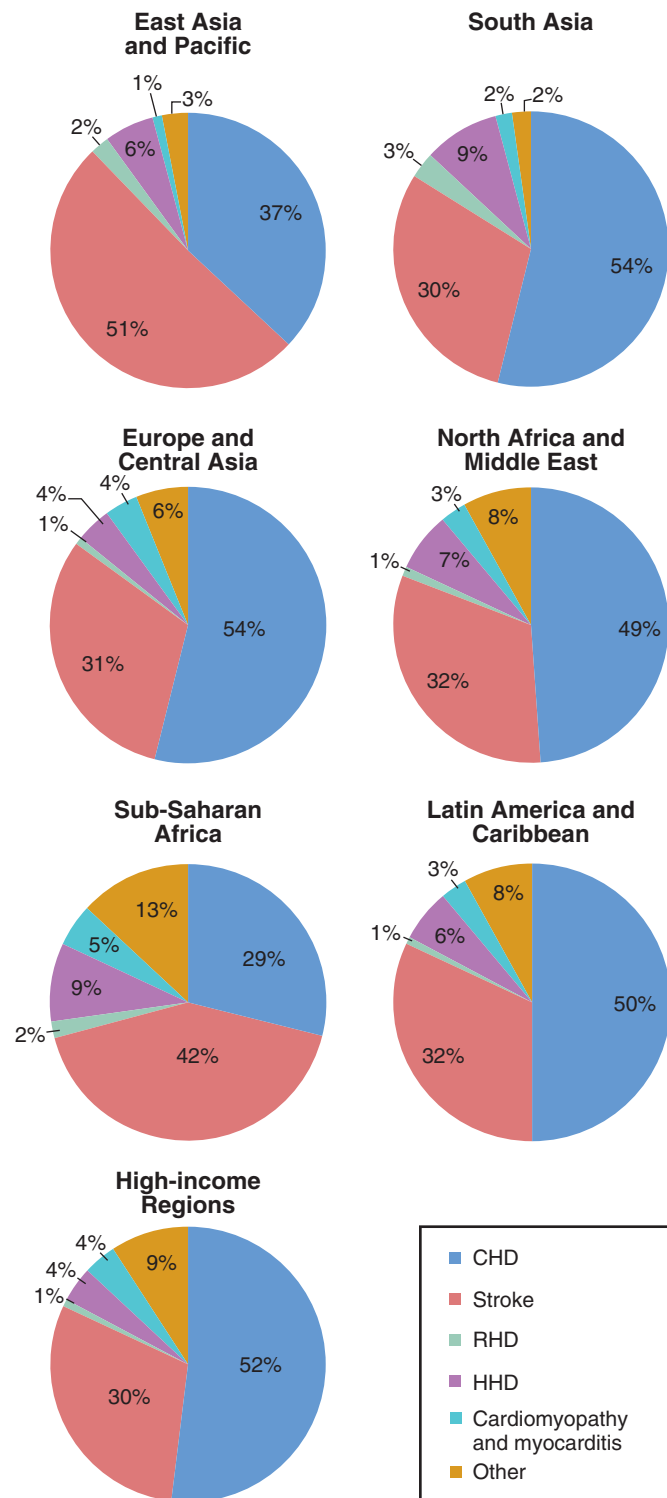


**FIGURE 1.6** Age-adjusted death rates per 100,000 population for cardiovascular disease, 1990 and 2013. (From Global Burden of Disease Study 2013. Age-sex specific all-cause and cause-specific mortality, 1990–2013. Seattle: Institute for Health Metrics and Evaluation; 2014.)

## High-Income Countries

In 2013, CVD accounted for almost 38% of all deaths in high-income regions, and CHD caused more than half of these deaths (see Fig. 1.7). The movement of most HICs through the epidemiologic transition, with rising levels of risk factors and CVD death rates until the 1970s and then declines in both over the next 40 years, resembles what occurred in the United States. CHD is the dominant form, with rates that tend to be twofold to fivefold higher than stroke rates. Two notable exceptions are Portugal, where stroke rates for both men and women exceed CHD rates, and Japan, where stroke causes many more fatalities than CHD. In both these countries, however, the pattern seems to be moving toward that seen in other HICs, with more rapid declines in stroke rates than in CHD rates.

Age-adjusted mortality for CVD declined in all HICs. This age-adjusted decline results largely from preventive interventions that allow people to avert disease, treatments to prevent death during an acute manifestation of disease (particularly stroke or MI), and interventions that prolong survival once CVD is manifest. Thus the average age at death from CVD continues to climb, and as a result, CVD affects a larger retired population.



**FIGURE 1.7** Cardiovascular disease death by specific cause and region. *CHD*, Coronary heart disease; *RHD*, rheumatic heart disease; *HHD*, hypertensive heart disease. (From Global Burden of Disease Study 2013. Age-sex specific all-cause and cause-specific mortality, 1990–2013. Seattle: Institute for Health Metrics and Evaluation; 2014.)

Western Europe, with an overall CVD mortality rate of 344 per 100,000 in 2013 and an age-standardized rate of 163 per 100,000, had the highest mortality rates, whereas Australasia had the lowest overall (234/100,000) rate, and Japan had the lowest age-adjusted rate (110/100,000). As mentioned, high-income regions have higher mortality rates for CHD than for stroke. The exception is the East Asia and Pacific region, where overall death rates for stroke and CHD are 132

per 100,000 and 88 per 100,000, respectively. Mortality rates and number of deaths attributable to stroke and CHD increased in this region between 1990 and 2010; stroke rates increased by approximately 18%, whereas CHD rates increased by almost 40%.<sup>12</sup> Japan is unique among HICs; as its communicable disease rates fell in the early 20th century, its stroke rates increased dramatically. CHD rates, however, did not rise as sharply in Japan as in other industrialized nations and have remained lower than in any other industrialized country. Overall, CVD rates have fallen 60% in Japan since the 1960s, largely because of a decrease in age-adjusted stroke rates. Japanese men and women currently have the highest life expectancy in the world: 86.4 years for women and 79.6 years for men. The difference between Japan and other industrialized countries may stem in part from genetic factors, although the traditional Japanese fish- and plant-based, low-fat diet and resultant low cholesterol levels may have also contributed. Nevertheless, as in many other countries, dietary habits in Japan are undergoing substantial changes. Since the late 1950s, cholesterol levels have progressively increased in both urban and rural populations. Although the prevalence of CVD risk factors is increasing in the Japanese population, the incidence of coronary artery disease remains low and even declined.<sup>13</sup> This situation could change, however, because there seems to be a long lag phase before dietary changes manifest as CHD events.

## East Asia and Pacific

### Demographic and Social Indices

The East Asia and Pacific (EAP) region is the most populated low-income and middle-income region in the world, with almost 2 billion people; approximately 49% of the region is urban. The gross national income (GNI) per capita is \$4243, ranging from \$4420 in Thailand to \$1130 in Laos. In 2004, total health expenditure was 4.8% of total gross domestic product (GDP), or \$183 per capita.<sup>14</sup> The region is divided into three distinct subregions: Southeast Asia, East Asia, and Oceania. China is by far the most populated country, representing almost 70% of the region. Life expectancy has risen quickly across the EAP region in past decades, up to an average of 72 years. In China the increase has been dramatic: from 37 years in the mid-1950s to 73 years in 2010.<sup>14</sup> This increase associates with a large rural to urban migration pattern, rapid urban modernization, aging of the population, decreased birth rates, major dietary changes, increasing tobacco use, and a transition to work requiring low levels of physical activity.

### Burden of Disease

CVD caused more than 5.2 million deaths in the EAP region in 2013, accounting for 38% of all deaths in the region. More than half of these deaths resulted from stroke, whereas only 31% were caused by CHD (see Fig. 1.7). CVD death rates differed significantly between subregions, most notably in Oceania. Age-adjusted mortality rates were highest in Oceania, at 439 per 100,000 in 2010, even though overall mortality for CVD was 205 per 100,000, suggesting that many premature deaths from CVD are occurring in Oceania.

Stroke and CHD lead as causes of death in the East Asia and Southeast Asia subregions. In Oceania, however, lower respiratory infections and diabetes account for the largest proportion of deaths. Whereas stroke and CHD rates increased in both East Asia and Southeast Asia, stroke rates decreased slightly in Oceania, from 40 to 36 per 100,000.<sup>12</sup> China appears to be straddling the second and third stages of a Japanese-like epidemiologic transition. Men in China age 50 to 69 have stroke death rates of 190 per 100,000, versus CHD death rates of 123 per 100,000.<sup>1</sup>

## Central and Eastern Europe and Central Asia

### Demographic and Social Indices

Of the three subregions that constitute this region—Central Asia, Central Europe, and Eastern Europe—Eastern Europe is the most populated. Russia alone accounts for more than 30% of the region's 404 million inhabitants. Sixty-five percent of the population in the region is urban, with an average life expectancy of 71 years. The average GNI per



capita for the region ranges from \$870 in Tajikistan to \$23,610 in Slovenia. Russia has a GNI of \$10,400. On average, the region spends more than 6% of total GDP on public and private health care. Health expenditure per capita ranges from \$49 per capita in Tajikistan to \$2154 in Hungary. Russia spends about \$525 per capita, or 5.1% of its GDP.<sup>14</sup>

### Burden of Disease

The highest rates of CVD mortality occur in this region. Overall CVD mortality rates are 793 per 100,000 in Eastern Europe and 547 per 100,000 in Central Europe. Overall rates resemble or exceed those seen in the United States in the 1960s, when CVD peaked. CHD is generally more common than stroke, which suggests that the countries that constitute Eastern Europe and Central Asia remain largely in the third phase of the epidemiologic transition. As expected in this phase, people who develop and die of CVD have a lower average age than that in HICs. In 2013, CVD accounted for almost 60% of all deaths in the region, 55% of which resulted from CHD and 33% from stroke.

A country-level analysis reveals important differences in CHD profiles within the Central and Eastern Europe and Central Asia region (see Fig. 1.3). Since the dissolution of the Soviet Union, CVD rates have increased surprisingly in some of these countries, with the highest rates (almost 800 per 100,000 for men) in Ukraine, Bulgaria, Belarus, and Russia.<sup>11</sup> By 2013, this region had the highest CVD mortality rates in the world. Of note, deaths resulting from CHD in these countries affect not only older adults; the GBD study estimates that working-age populations (15 to 69 years) have a significant CHD burden. Almost one third of all deaths in persons age 45 to 49, for example, result from CVD. For people age 60 to 64, CVD accounts for half of all deaths, 27% of which are caused by CHD.<sup>12</sup>

## Latin America and the Caribbean

### Demographic and Social Indices

The Latin America and Caribbean (LAM) region comprises Andean Latin America, Central Latin America, Southern Latin America, Tropical Latin America, and the Caribbean. The region has a total population of 589 million, 79% of which is urban.<sup>14</sup> Brazil, the region's most populous country, represents one third of the population, with Argentina, Colombia, Mexico, Peru, and Venezuela making up another third. The Caribbean nations, including the Dominican Republic, Jamaica, and Haiti, account for less than 10% of the population in the region. Life expectancy in the LAM region is approximately 74 years but varies greatly. In 2010, for example, Haiti and Cuba had life expectancies of 64 years and 79 years, respectively. Average GNI per capita in the region is about \$8544 (purchasing power parity [PPP] of \$11,587). The region spends an average of 7.7% of its GDP on health care. This level of spending translates into health care expenditures that range from \$46 per capita in Haiti to \$1003 per capita in Barbados.<sup>14</sup>

### Burden of Disease

The LAM region bears a substantial CVD burden. In 2013, CVD caused 29% of all deaths in the region. As in HICs, CHD dominates among circulatory diseases (see Fig. 1.7). Mortality rates vary significantly by subregion. The Caribbean has the highest age-standardized mortality rates for CHD and stroke: 150 deaths per 100,000 and 110 per 100,000, respectively. As with other global trends, overall mortality increased between 1990 and 2013, but age-adjusted mortality declined for this region. Death rates also increased in Central Latin America and Andean Latin America; similar increases in mortality occurred in Tropical Latin America. Together, CHD (14%), stroke (6.9%), and hypertensive heart disease (2.1%) accounted for almost one quarter of all deaths in Central Latin America in 2010. Southern Latin America, which includes Argentina, Chile, and Uruguay, was the only subregion to have declines in both overall and age-adjusted CVD mortality rates. Overall CVD, CHD, and stroke mortality rates decreased in this subregion between 1990 and 2010, but to a lesser extent than for global changes.<sup>12</sup> The lower reductions in the LAM region may result from rapid lifestyle changes: unfavorable dietary changes, increased smoking, increased obesity, and less exercise.

## North Africa and the Middle East

### Demographic and Social Indices

The 19 countries of the North Africa and Middle East region represent approximately 5% of the world's population (337 million people). Egypt and Iran are the two most populous countries in the region, with Egypt representing 24% of total inhabitants and Iran, 22%. Approximately 59% of the population is urban, with an average life expectancy of 72 years. The average GNI per capita for the region is \$3869, ranging from \$1070 in Yemen to \$48,900 in Kuwait. Approximately 5.3% of the GDP, or approximately \$203 per capita, is expended for health in the region. The per capita health expenditure ranges from \$63 in Yemen to \$1450 in the United Arab Emirates.<sup>14</sup>

### Burden of Disease

Forty-two percent of all deaths in the North Africa and Middle East region result from CVD: 9% from CHD and 32% from stroke. The region has lower CVD mortality rates than global averages. In 2013 the overall death rate per 100,000 for CHD, stroke, and overall CVD were 89, 57, and 180, respectively. The mortality rate for CHD only declined marginally in the region since 1990, when the rates were 88, 62, and 192 deaths per 100,000 population, respectively. However, age-adjusted mortality rates for CVD declined by almost 25% across the region. In 2013, CVD accounted for 20 million DALYs lost, or 21% of all DALYs lost in the region. The DALYs lost were split differently between CHD and stroke, at 9.7 million and 5.7 million, respectively.<sup>12</sup>

## South Asia

### Demographic and Social Indices

The South Asia region (SAR), one of the world's most densely populated regions, accounts for about 24% of the world's population, with more than 1.6 billion residents. India, home to almost 75% of the region's inhabitants, is the largest country in the region. Only 31% of the region is urban, and life expectancy is approximately 65 years. Average GNI per capita for the region is \$1299, ranging from \$540 in Nepal to \$6530 in Maldives. India's GNI per capita of \$1410 sits near the regional average. Countries in the SAR spend an average of 3.9% of their total GDP, or \$47 per capita, on health care. Maldives spends the most per capita at \$208, and India spends \$31, or 5% of its GDP. The lowest expenditures for health care are \$22 per capita in Pakistan and \$23 in Bangladesh.<sup>14</sup>

### Burden of Disease

CVD accounts for 27% of all deaths in the SAR. CHD led causes of mortality in 2013—responsible for 15% of total reported fatalities, or 2 million deaths, and more than half of CVD mortality. Cerebrovascular disease accounted for 6.8% of all deaths and 30% of CVD deaths. The region loses almost 60.5 million DALYs from CVD, accounting for 10% of the total. CHD contributes 4.6% of the DALYs lost because of CVD, nearly twice as high as for stroke.<sup>12</sup> Mortality rates for CVD are increasing in the region.

CVD probably represents 31% of all deaths in India, the largest country in the SAR. Studies also show a higher CHD prevalence in men and in urban residents. The rise in CHD mortality contributes to the economic burden in the Indian subcontinent. Data indicate that symptoms of CHD arise 5 to 10 years earlier in this region than in Western European and Latin American countries.<sup>15</sup>

## Sub-Saharan Africa

### Demographic and Social Indices

The GBD study divides sub-Saharan Africa into four subregions: Central Africa, East Africa, Southern Africa, and Western Africa. Approximately 875 million people live in these four regions, with Nigeria being the most populous (163 million) and Cape Verde being the least populous (500,600). Only 36% of the population in the region is urban. The average GNI per capita is \$1255, ranging from \$250 in Burundi to \$7480 in Botswana. Overall, the region also has the lowest average life expectancy—54 years.<sup>14</sup> Average public and private health care